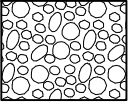
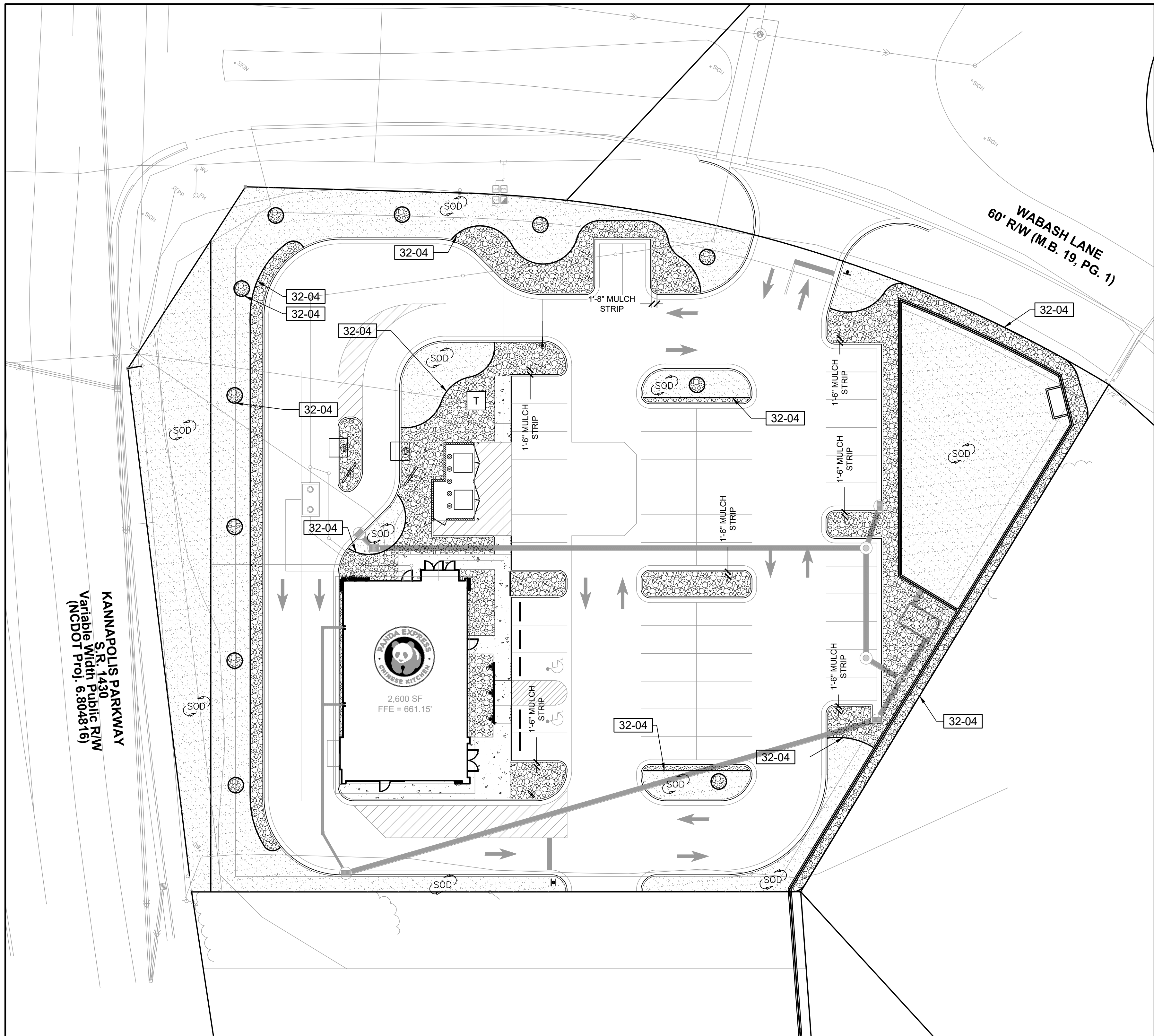


STONE MULCH	CODE	QTY	BOTANICAL NAME	COMMON NAME	CONT	HT
	SM	7,079 SF	MULCH	STONE MULCH	MULCH	

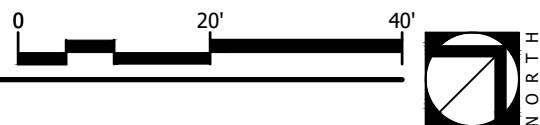
REFERENCE NOTES SCHEDULE

SYMBOL	32 EXTERIOR IMPROVEMENTS DESCRIPTION	QTY	DETAIL
32-04	ALUMINUM BED EDGING	944 LF	

QUANTITY TAKEOFF DISCLAIMER:
QUANTITIES NOTED ON PLANS ARE OFFERED AS A CONVENIENCE
TO THE CONTRACTOR FOR BID PURPOSES ONLY. CONTRACTOR
SHALL VERIFY ALL QUANTITIES AND REPORT ANY DISCREPANCIES
TO THE LANDSCAPE ARCHITECT.



1 MULCHING AND EDGING PLAN
Scale: 1"= 20'



PANDA EXPRESS, INC.

1683 WALNUT GROVE AVE.
ROSEMEAD, CALIFORNIA 91770

TELEPHONE: 626.799.9898
FACSIMILE: 626.372.8268

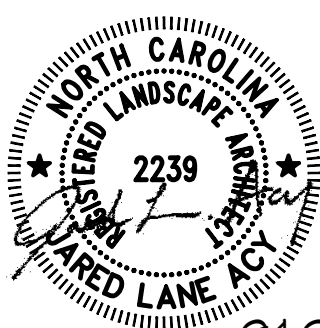
REVISIONS:

ISSUE DATE:

PLAN CHECK	03-08-23
BID	XX-XX-XX
CONSTRUCTION	XX-XX-XX

DRAWN BY: LDC, WAS DESIGN, INC.

PANDA PROJECT #: D24956
PANDA STORE #: TBD
CIVIL PROJECT #: 220148



MULCHING
AND EDGING
PLAN
L1.1