



BASIS OF BEARINGS

BETWEEN MONUMENTS FOUND AS SHOWN PER REFERENCE 1 AND
ROTATED -0'13'24" FROM THE RECORD BEARING.

COUNTY SURVEYOR'S NOTE:

THIS MAP IS APPROVED FOR FILING PURSUANT TO CALIFORNIA GOV'T CODE SECTION 66412 (d) IN ACCORDANCE WITH COUNTY APPROVED BOUNDARY LINE ADJUSTMENT No. B63-98.

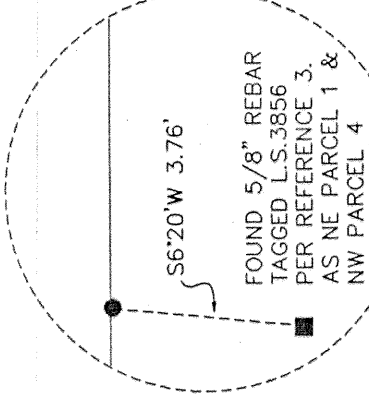
NOTES:

1. BEARINGS AND DISTANCES SHOWN HEREON AGREE WITH ADJOINING RECORD DATA UNLESS SHOWN OTHERWISE.
2. DISTANCES SHOWN ARE IN FEET AND DECIMALS THEREOF.

LEGEND

- SET 5/8" REBAR TAGGED L.S.4518
 ■ MONUMENT AS DESCRIBED
 () RECORD DATA PER REFERENCE
 _____ PROPERTY LINE NOT LOCATED IN THIS SURVEY
 O.R. OFFICIAL RECORDS
 O.A. OVERALL DISTANCE

DETAIL



FOUND STANDARD 3-1/2
CORP. OF ENGINEERS
MONUMENT "X-2" PER
REFERENCE 1.

SEE NOTE
BASIS OF BEARINGS
(N00°40'04"W 688.16')
(N00°26'40"W 688.18')

FOUND 1 1/2" IRON PIPE
TAGGED L.S.3089 PER
REFERENCE 1.

LANDS OF SAWYER

INST. NO. 2000-00110
M.C.R.

PARCEL 4

M:C.2, DR 26, PG.58, M.C.R.

LANDS OF BURRELL

INST. NO. 2000-00109
M.C.R.

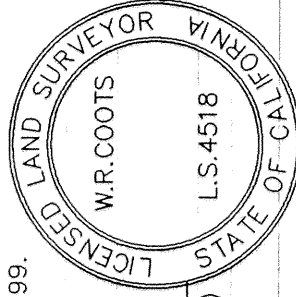
GRAPHIC SCALE 1"=200'

A horizontal graphic scale bar with alternating black and white segments. It is marked with the numbers 0, 200, 400, and 500, representing feet. The scale is oriented horizontally, with 0 on the left and 500 on the right.

SURVEYOR'S STATEMENT

THIS MAP CORRECTLY REPRESENTS A SURVEY MADE BY ME OR UNDER MY DIRECTION IN CONFORMANCE WITH THE REQUIREMENTS OF THE LAND SURVEYORS' ACT AT THE REQUEST OF CHARLES SAWYER IN NOVEMBER 1999.

W.R.COOTS - R.L.S.4518 (EXP.DATE = 9/30/02)



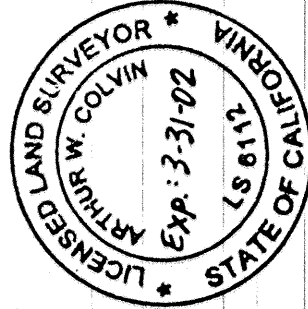
BY: *A. Thompson*

ARTHUR W. COLVIN - L.S.6112 EXP.DATE=3/31/02
DEPUTY COUNTY SURVEYOR

COUNTY SURVEYOR'S STATEMENT

THIS MAP HAS BEEN EXAMINED IN ACCORDANCE WITH
SECTION 8766 OF THE LAND SURVEYORS' ACT THIS
10TH DAY OF FEBRUARY, 2000.

STANLEY TOWNSEND – COUNTY SURVEYOR
MENDOCINO COUNTY, CALIFORNIA



BY: Ela Bernard DEPUTY

800

RECORDED'S STATEMENT

FILED THIS 11 DAY OF FEBRUARY, 2000 AT
3:02 P.M. IN MAPS, DRAWER 67, PAGE 8, M.C.R.
AT THE REQUEST OF W. R. COOTS.

MARSHA A. WHARFF - COUNTY RECORDER

RECORD OF SURVEY

BEING A PORTION OF LOT 98
OF THE YOKAYO RANCHO
MENDOCINO COUNTY, CALIFORNIA
JANUARY 2000

11 井

SHEET 1 OF 1

MAPS
DRAWER 67
PAGE 8

JOB NO. 98-83