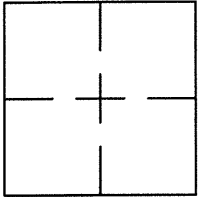


CORNER RECORD

Document Number CR 9176City of OAKLANDCounty of ALAMEDA, CaliforniaBrief Legal Description WELL MONUMENT LOCATED WITHIN OAK STREET.

CORNER RECORD

Government Corner ☐ Control ☐
 Meander ☐ Property ☐
 Rancho ☐ Other ☒
 Date of Survey 10/9/16

COORDINATES
(Optional)

N. _____
 E. _____
 Zone _____ Datum _____
 Elev. _____

Corner — Left as found ☒ Found and tagged ☐ Established ☐ Reestablished ☐ Rebuilt ☐

Identification and type of corner found: Evidence used to identify or procedure used to establish of reestablish the corner:
FOUND 1/4" PIN IN MONUMENT WELL LOCATED WITHIN THE INTERSECTION OF

OAK STREET AND 13TH STREET.

SEE CR 8543

THIS POINT WAS FOUND IN GOOD CONDITION AFTER A CONSTRUCTION
PROJECT IN THE VICINITY.

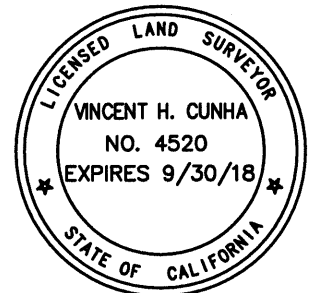
A description of the physical condition of the monument as found and as set or reset: _____
FOUND AND SET POINTS AS SHOWN ON PAGE 2.

THE TIES SHOWN HEREON ARE FOR THE PURPOSE OF PERPETUATING FOUND MONUMENTATION.
NO CLAIM IS MADE AS TO THE RELATIONSHIP OF THE POINTS OR LINES SHOWN HEREON TO
TRUE BOUNDARY LOCATIONS.

SURVEYOR'S STATEMENT

This Corner Record was prepared by me or under my direction in conformance with
 the Land Surveyors' Act on October 17, 2016.

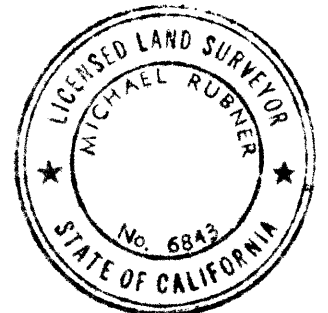
Signed Vincent H. Cunha L.S. Number LS 4520
VINCENT H. CUNHA



COUNTY SURVEYOR'S STATEMENT

This Corner Record was received 21 OCTOBER 2016 and examined
 and filed 8 DECEMBER 2016.

Signed Michael Rubner Title COUNTY SURVEYOR



County Surveyor's Comment _____



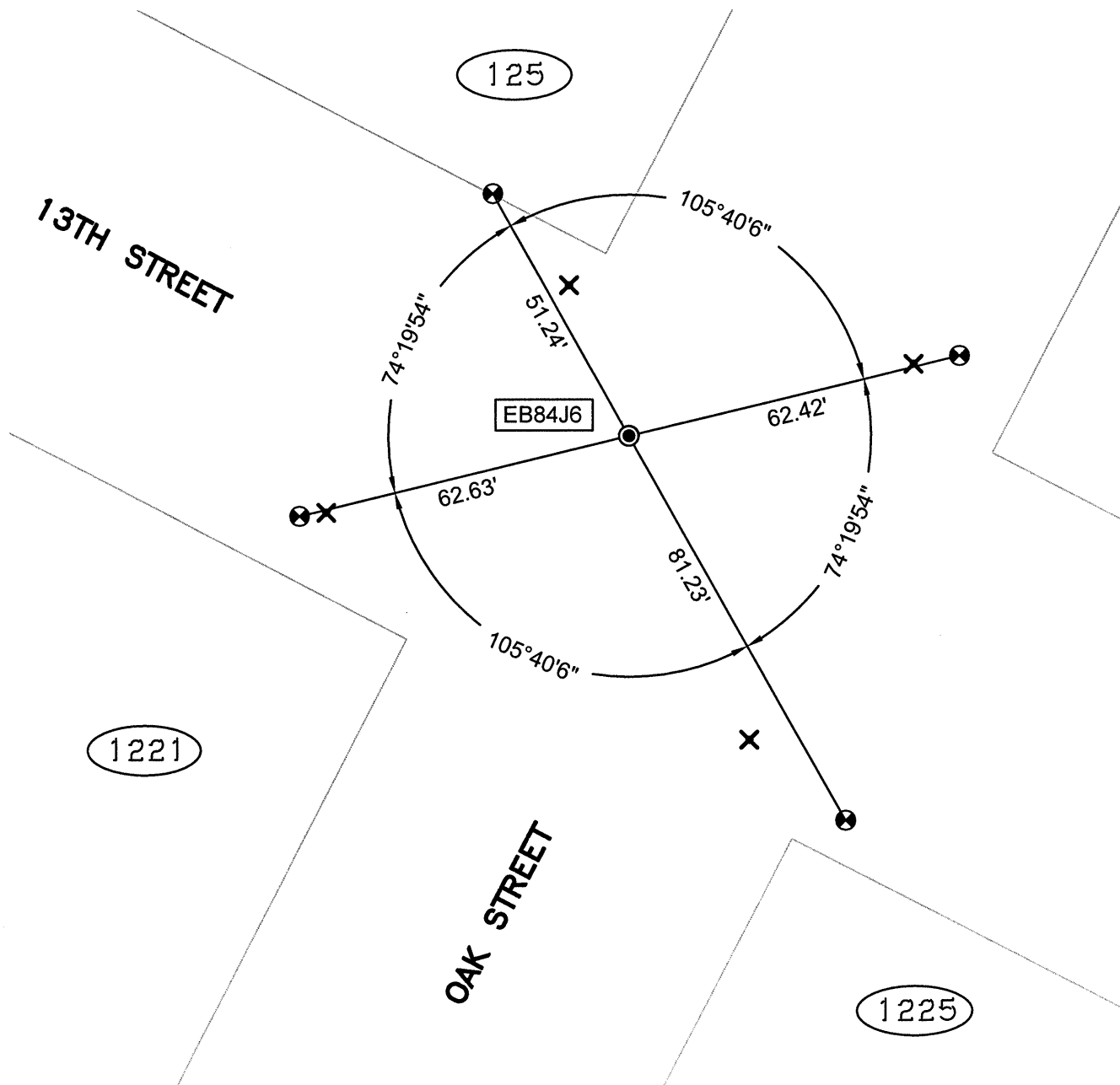
SCALE: 1"=30'

LEGEND

- FOUND 1/4" PIN IN MONUMENT WELL
- ⊗ FOUND CUT CROSS IN WALK
- ✕ FOUND EBMUD "RP" WITHIN CONSTRUCTION AREA
- FOUND REBAR & CAP STAMPED "CEI RP"

(19592) REFERENCE STREET ADDRESS

AA##A# ALAMEDA COUNTY MONUMENT ID



216040-Oak-CR10-POST