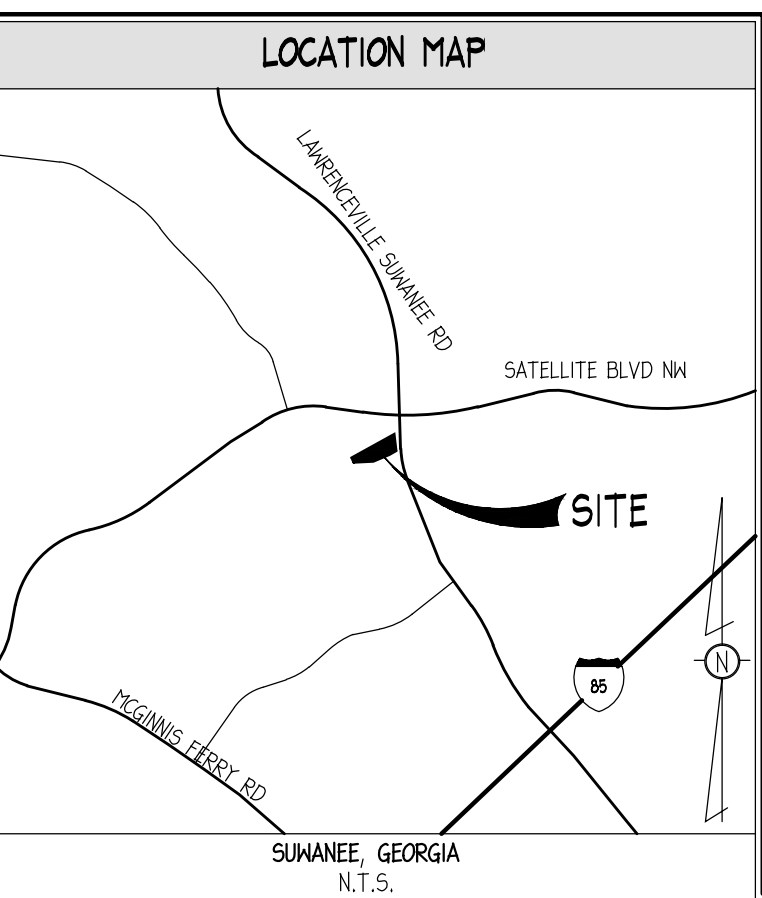
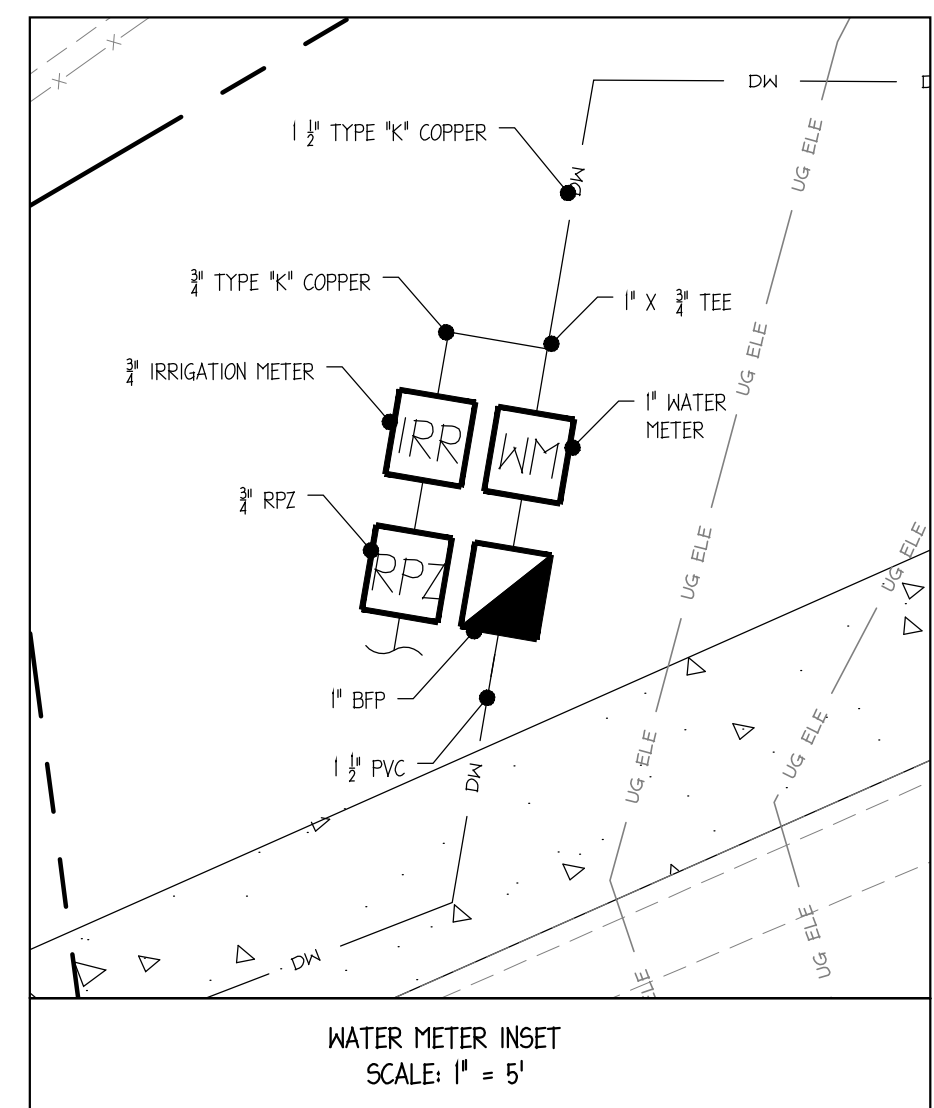


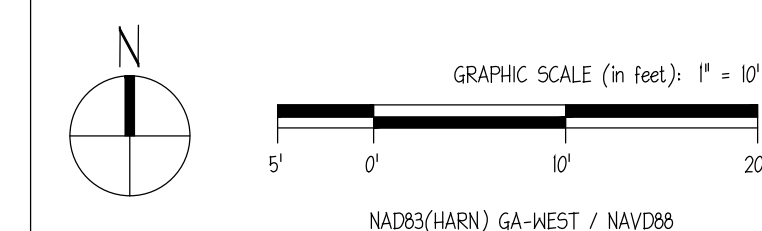
UTILITY LEGEND		
UTILITY	LINETYPE/SYMBOL	REFERENCE
DOMESTIC WATER LINE	DW — DW —	1 1/2" PVC
FIRE WATER LINE	FW — FW —	N/A
BUILDING FIRE SPRINKLER LINE	FWS — FWS —	N/A
IRRIGATION WATER LINE	IRR — IRR —	3/4" PVC
DOMESTIC WATER METER (WM)	WM	1" WATER METER
IRRIGATION METER (IRR)	IRR	3/4" IRR METER
BACKFLOW PREVENTER (RPZ)	RPZ	3/4" RPZ
FIRE VAULT (DDC)	DDC	N/A
DC BACKFLOW PREVENTER	DC	1" BFP
WATER TAP OR TEE	+	"
GATE VALVE (GV)	GV	N/A
THRUST BLOCK (TB)	TB	N/A
FIRE HYDRANT (FH)	FH	N/A
FIRE DEPARTMENT CONNECTION (FDC)	FDC	N/A
SANITARY SEWER (SS)	SS — SS —	6" PVC
SANITARY MANHOLE (SSM)	SSM	SEE PLANS
GENERAL CLEAN OUT (GO)	GO	SEE PLANS
SAMPLING MANHOLE	SM	N/A
SANITARY STRUCTURE NUMBER	SN	SEE PLANS
UNDERGROUND ELECTRIC LINE-PRIMARY	UGE-P — UGE-P —	(1) 4" PVC
UNDERGROUND ELECTRIC LINE-SECONDARY	UGE-S — UGE-S —	(1) 4" PVC
POST INDICATOR VALVE	PIV	N/A
SITE LIGHTING POLE	SLP	SEE PLANS
TRANSFORMER PAD	T	"
METER/CT PEDESTAL	CT	N/A
UNDERGROUND TELEPHONE LINE	UGT — UGT —	(1) 4" PVC CONDUIT
GENERAL UTILITY CONDUIT	GU — GU —	(2) 4" PVC
GAS LINE	G — G —	"
GAS METERS	G	"
** ALL UTILITIES SHALL BE INSTALLED ACCORDING TO UTILITY PROVIDERS AND JURISDICTION STANDARDS AND SPECIFICATIONS.		



- ### GENERAL UTILITY NOTES
- SEE SHEET C04 FOR GENERAL NOTES.
  - SEE MEP PLANS FOR CONTINUATION OF ALL UTILITIES INTO BUILDING.
  - SANITARY LATERALS SHALL HAVE A MINIMUM FALL OF 1/8".
  - CONTRACTOR SHALL FIELD VERIFY ALL EXISTING UTILITIES AND THEIR LOCATIONS AND ELEVATIONS PRIOR TO STARTING CONSTRUCTION.
  - THE FINAL LOCATION OF FIRE HYDRANTS, VALVES, WATER LINES, BACKFLOW PREVENTERS, ETC. SHALL BE DETERMINED DURING CONSTRUCTION. NOTIFY THE ENGINEER OF ANY CHANGES TO LOCATION OR CONFIGURATION. NFPA CODES SHALL BE ADHERED TO.
  - THE CONTRACTOR SHALL CONTACT PUBLIC UTILITIES INSPECTIONS AT LEAST 72 HOURS PRIOR TO ANY CONSTRUCTION ACTIVITY.
  - ALL WORK TO BE DONE IN STRICT ACCORDANCE WITH LOCAL GOVERNING CODES.
  - UTILITY CONDUIT MATERIAL FOR ELECTRIC, TELEPHONE, AND CABLE SHALL BE INSTALLED PER UTILITY PROVIDER SPECIFICATIONS.
  - CONTRACTOR TO BUILD CONCRETE TRANSFORMER PAD AND INSTALL SCHEDULE 80 PVC CONDUIT AND PULL STRING WITH SWEETING BENDS.



- CONTRACTOR SHALL COORDINATE AND VERIFY LOCATION OF ALL SIGNAGE WITH OWNER PRIOR TO CONSTRUCTION.
- CONTRACTOR SHALL COORDINATE AND ADJUST LOCATION OF LOOP DETECTORS TO AVOID UTILITY CONFLICTS PRIOR TO CONSTRUCTION.
- CONTRACTOR SHALL INSTALL GENERAL UTILITY CONDUITS TO PLANTERS AROUND BUILDING AND PATIO. SEE ARCHITECTURAL/MEP PLANS FOR CONTINUATION.
- CONTRACTOR SHALL PROTECT ALL ITEMS OUTSIDE LIMITS OF CONSTRUCTION UNLESS OTHERWISE NOTED IN THE CONSTRUCTION PLANS OR SPECIFICATIONS.
- CONTRACTOR SHALL FIELD VERIFY ALL EXISTING UTILITIES (LOCATIONS AND ELEVATIONS) PRIOR TO STARTING CONSTRUCTION AND ALERT ENGINEER TO ANY DISCREPANCIES IMMEDIATELY.
- 24-HOUR CONTACT:  
JOE CELENTO  
(912) 201-2129



PANDA EXPRESS  
3276 LAWRENCEVILLE-SUNANEE RD.  
SUNANEE, GEORGIA  
D5253



CLIENT:  
PANDA RESTAURANT GROUP, INC.  
1683 WALNUT GROVE AVE  
ROSEMead, GA 31770  
PHONE: (626) 372-8119

REVISION HISTORY	
1	ISSUED FOR PERMITTING

THE CIVIL ENGINEER REGULARLY UPDATES ELECTRONIC FILES DURING THE DEVELOPMENT OF A PROJECT. AS A RESULT, THE DATA INCLUDED IN ANY CAD FILE OR DRAWING PRIOR TO ITS FINAL RELEASE DOES NOT NECESSARILY REFLECT THE COMPLETE SCOPE OR CONTENT AS DEFINED IN THE CONTRACT. THE CONTENTS IN THESE FILES MAY THEREFORE BE PRELIMINARY, INCOMPLETE WORK IN PROGRESS, AND SUBJECT TO CHANGE. FURTHERMORE, THE INFORMATION CONTAINED HEREIN IS THE EXCLUSIVE PROPERTY OF THE CIVIL ENGINEER. THE ORIGINAL LEGAL REPRESENTATION HERE BY THIS INFORMATION SHALL NOT BE USED, ALTERED, OR REPRODUCED IN ANY MANNER WITHOUT THE EXPRESSED WRITTEN CONSENT OF THE CIVIL ENGINEER. THESE PLANS ARE SUBJECT TO FEDERAL COPYRIGHT LAWS AND USE OR SALE WITHOUT EXPRESSED WRITTEN PERMISSION OF THE CIVIL ENGINEER IS PROHIBITED.

PROJ #	160251
DWG NAME	160251_C04.DWG
ISSUE DATE	02/22/2017
PROJ TGR	EB

BUILDING UTILITY  
DETAIL PLAN

C04.1  
SHEET NUMBER

ISSUE FOR PERMITTING/BID