

Z:\Rodney Sartain\20-296 Jacks - Walnut M5 SC 60x20-296 MECH.dwg - e1m1

PLUMBING FIXTURE CONNECTION SCHEDULE					
MARK	FIXTURE	WASTE	CW	HW	REMARKS
P-1	WATER CLOSET	3"	1"	—	ADA — FLOOR MTD.
P-2	WATER CLOSET	3"	1"	—	REG. — FLOOR MTD.
P-3	LAVATORY	1 1/4"	1/2"	1/2"	ADA/COUNTER TOP W/ASSE 1070 TMV
P-4	URINAL	2"	3/4"	—	SEE ARCH FOR MOUNTING HT.
P-5	HAND SINK	1 1/2"	1/2"	1/2"	ADA/WALL HUNG W/ASSE 1070 TMV
P-6	3-COMP SINK	F.S.	1/2"	1/2"	INDIRECT DRAIN, PIPE EACH BOWL SEPARATE TO FS
P-7	PREP SINK	F.S.	1/2"	1/2"	ROUGH-IN AND CONN.
P-8	ICE MACHINE	F.S.	1/2"	—	FILTERED CW
P-9	COFFEE OR TEA MAKER	F.S.	1/2"	—	PROVIDE ASSE 1022 BFP
P-10	DRINK DISPENSER	F.S.	1/2"	—	FILTERED CW THRU DRINK RACK SYSTEM
P-11	MOP SINK	3"	1/2"	1/2"	—
P-12	HOT WATER DISPENSER	—	1/2"	—	FILTERED CW
P-13	WATER HEATER	—	1"	1"	85 GALLON, 24 KW
P-14	HOT WATER MACHINE	—	1/2"	—	ROUGH-IN AND CONN.

— — — — —	SOIL OR WASTE LINE: SCHEDULE 40 DWV PVC WITH DWV FITTINGS & SOLVENT WELD JOINTS. CAST IRON IN PLENUM AREAS, OR WHERE NOISE WILL BE A PROBLEM, SUCH AS A WASTE STACK.
— — — — —	VENT LINE: SAME AS WASTE LINE.
— — — — —	COLD WATER LINE: HARD COPPER WITH WROUGHT COPPER FITTINGS & JOINTS OF 95-5 LEAD FREE SOLDER & FLUX. INSULATE WITH 1/2" INSULATION & INSTALL ON CLEVIS HANGERS 5'-0" ON CENTER. PROVIDE 8" LONG SHEET METAL SADDLE CENTERED AT EACH HANGER. CONTRACTOR'S OPTION: SUBSTITUTE PEX FOR HARD COPPER. PEX TO BE 'UPONOR-WIRSBO FULL FLOW SYSTEM'.
— — — — —	HOT WATER LINE: SAME AS COLD WATER LINE.
— S —	STORM LINE: PVC PLASTIC.
— G —	GAS LINE: BLACK STEEL PIPE, SCHEDULE 40, ASTM A-53.
— + —	GAS COCK
— ● —	BALL VALVE: WATTS 6080 FULL PORT.
—    —	UNION
— ○ —	PIPE TURNING UP
— + ○ —	PIPE TURNING DOWN
— U —	P TRAP
⊗ FD	FLOOR DRAIN: PVC BODY 6" ROUND OR SQUARE NICKEL BRONZE GRATE. PPROVIDE TRAP PRIMERS WHERE REQUIRED BY CODE OR INDICATED ON DRAWINGS. TRAP GUARD #TG331P MAY BE USED IN LIEU OF TRAP PRIMER WHERE ACCEPTABLE BY THE LOCAL CODE OFFICIAL.
⊗ FS	FLOOR SINK: PVC BODY WITH GRATE AND DOME BOTTOM STRAINER.

P-#	PLUMBING FIXTURE NUMBER
△	RISER DIAGRAM NUMBER
AFF	ABOVE FINISH FLOOR
CO	CLEAN OUT
ABV	ABOVE
WS	WASTE STACK
SS	SOIL STACK
VS	VENT STACK
VSTR	VENT STACK THRU ROOF
CW	COLD WATER
HW	HOT WATER
EX	EXISTING
W/TP	WITH TRAP PRIMER
EXIST.	EXISTING
● →	NEW CONN TO EXIST

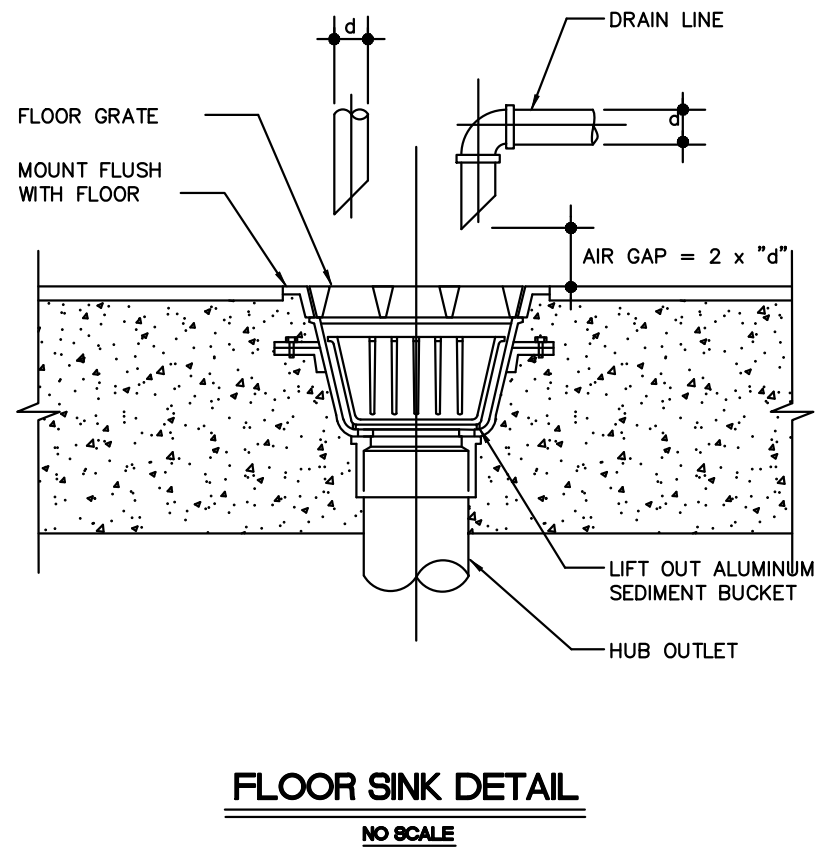
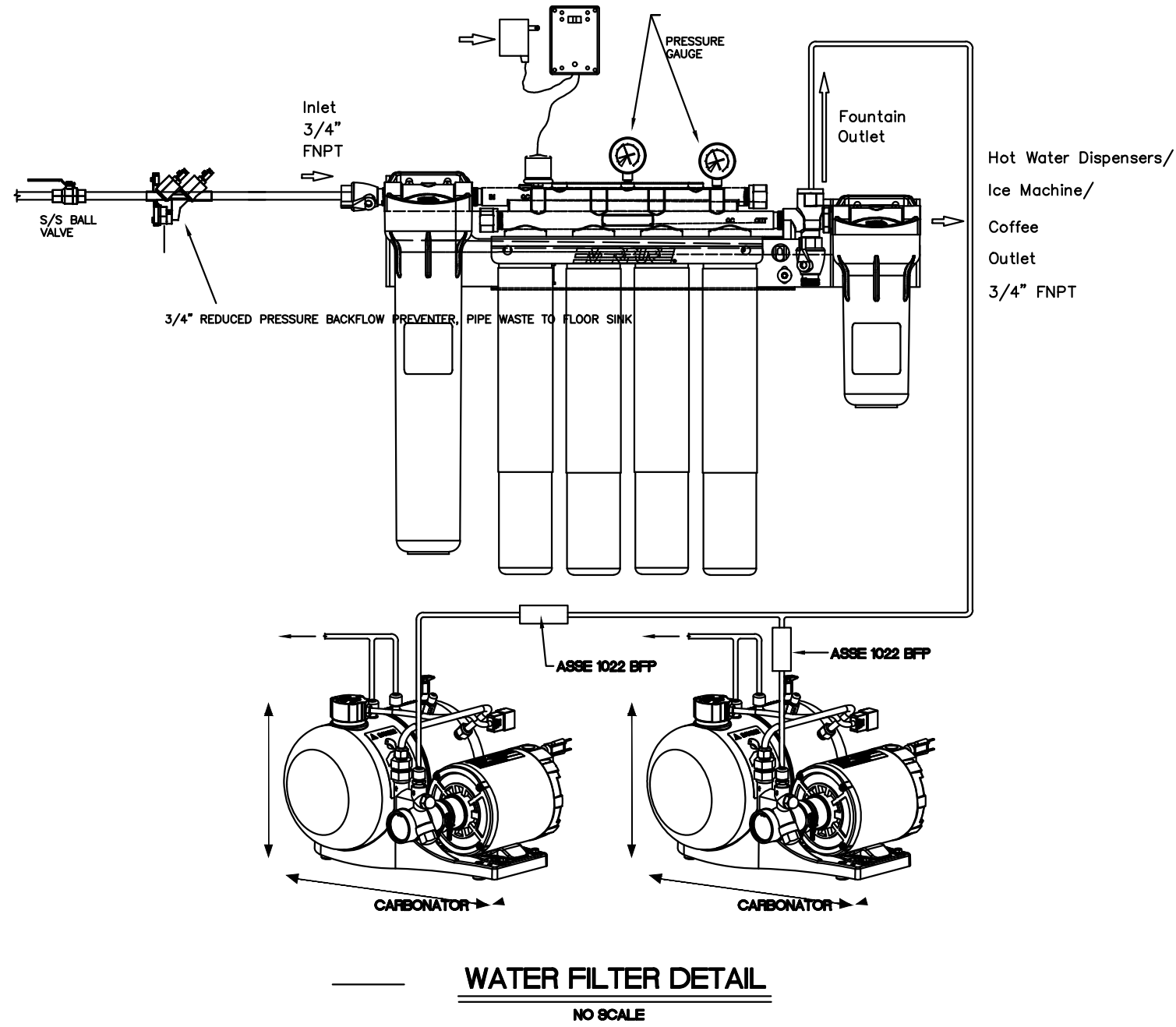
#### PLUMBING GENERAL NOTES

- CONTRACTOR SHALL VERIFY EXACT LOCATION, SIZE AND ELEVATION OF ALL EXISTING SERVICES PRIOR TO INSTALLING ANY NEW PIPE.
- ALL OUTSIDE CLEANOUTS SHALL BE BROUGHT TO GRADE AND EMBEDDED IN 18"x18"x6" THICK CONCRETE PAD. (J.R. SMITH 4258 OR EQUAL.)
- WHEREVER DISSIMILAR METALS ARE CONNECTED ON WATER LINES, A DIELECTRIC UNION SHALL BE USED.
- ALL HORIZONTAL WATER, GAS AND VENT PIPING IS RUN ABOVE CEILING ON PLAN WHICH SHOWN UNLESS OTHERWISE NOTED. CONTRACTOR MAY RUN WATER PIPING UNDER SLAB PROVIDED THERE ARE NO JOINTS OR FITTINGS UNDER SLAB.
- ALL HORIZONTAL SANITARY PIPING IS RUN BELOW FLOOR ON PLAN WHICH SHOWN UNLESS OTHERWISE NOTED.
- ALL WATER PIPING BELOW SLAB ON GRADE SHALL BE BENT UP AT ENDS SO THAT NO JOINTS OCCUR BELOW FLOOR.
- COORDINATE ALL PIPE ROUTING TO AVOID CONFLICTS WITH STRUCTURAL, MECHANICAL, AND ELECTRICAL FEATURES OF BUILDING.
- ALL RUNNING TRAP CLEANOUTS SHALL BE EXTENDED UP THRU FLOOR SLAB WITH C.O. COVER.
- ALL WALL HYDRANTS AND HOSE BIBBS SHALL BE MOUNTED 24" ABOVE FINISH FLOOR UNLESS OTHERWISE NOTED.
- ALL WATER PIPING INSTALLED IN EXTERIOR WALLS SHALL BE LOCATED ON THE INTERIOR SIDE OF THE EXTERIOR WALL INSULATION.
- PAVEMENT CUTS, BACKFILLING AND PATCHES SHALL MEET LOCAL CITY AND/OR COUNTY CODE REQUIREMENTS.

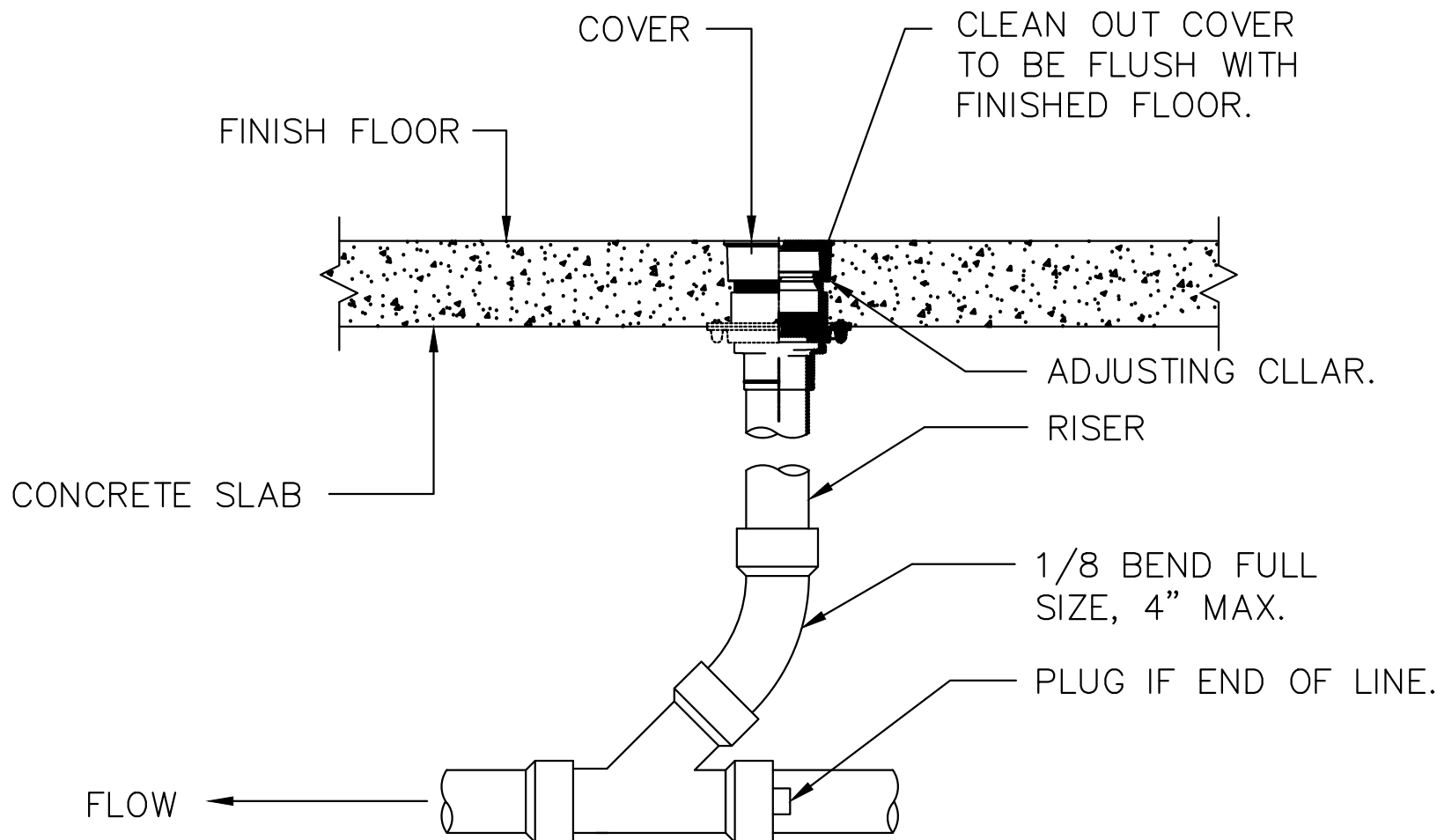
#### PLUMBING SPECS

NOTE: FIXTURES BELOW ARE GENERALLY FURNISHED BY OWNER, INSTALLED BY CONTRACTOR, COORD. EXACT REQUIREMENTS WITH OWNER PRIOR TO BID.

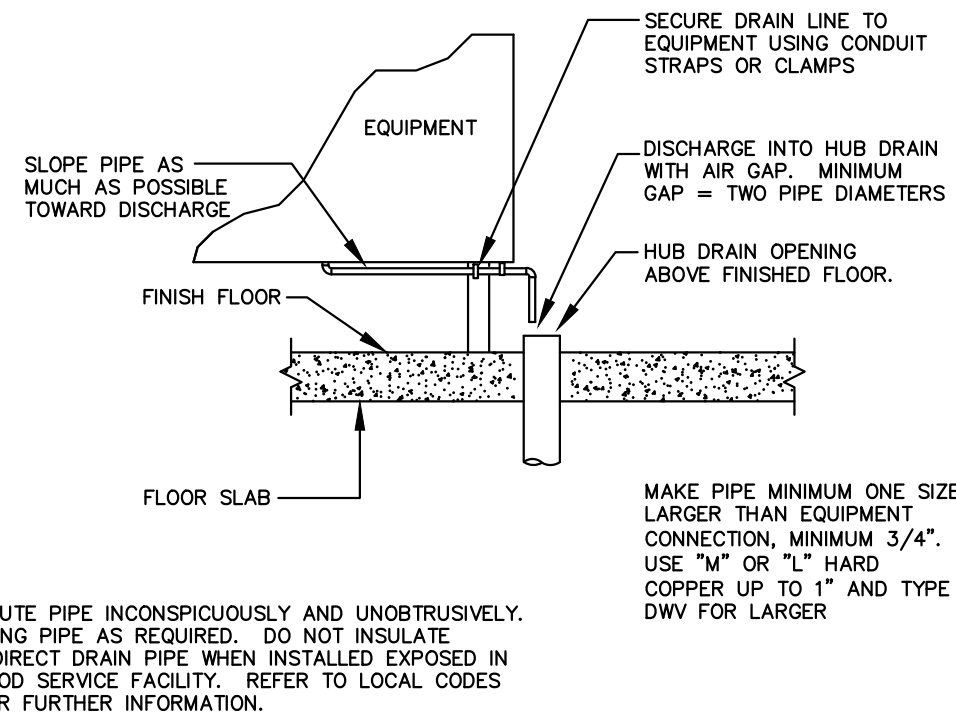
- P-1 WATER CLOSET: AMERICAN STANDARD 3043.001, COMFORT SEATS MODEL C106C SEAT AND SLOAN REGAL 111 XL FLUSH VALVE.
- P-2 WATER CLOSET: AMERICAN STANDARD 2234.001, COMFORT SEATS MODEL C106C SEAT AND SLOAN REGAL 111 XL FLUSH VALVE.
- P-3 LAVATORY: COUNTER TOP — KOHLER K-2196 COMPLETE, T&S B-1110-XS FAUCET, K-7715 OUTLET WITH TAILPIECE, McGuire #165 STOPS WITH SUPPLIES AND McGuire #8872 P-TRAP, INSULATE P-TRAP, STOPS AND SUPPLIES WITH EBC INSULATOR KIT OR "PRO-WRAP" BY McGuire.
- P-4 URINAL: WALL HUNG AMERICAN STANDARD 6590.001.020 WASHBROOK WITH STRAINER, SLOAN REGAL 186XL FLUSH VALVE AND J.R. SMITH 67 FIXTURE SUPPORT. INSTALL WITH LIP 17" ABOVE FINISH FLOOR AT 'LOW UNIT.
- P-5 HAND SINK: FURNISHED BY OTHERS, INSTALLED UNDER THIS SECTION, JOHN BOOS MODEL PBHS-W-KVMB-SSP-X
- P-6 POT SINK: FURNISHED BY OTHERS, INSTALLED UNDER THIS SECTION, PIPE EACH BOWL SEPARATELY TO F.S.
- P-7 VEGETABLE SINK: FURNISHED BY OTHERS, INSTALLED UNDER THIS SECTION, PIPE EACH BOWL SEPARATELY TO F.S.
- P-8 ICE MACHINE: FURNISHED AND INSTALLED UNDER ANOTHER SECTION, ROUGH AND COMPLETE. PROVIDE BALL VALVE STOP ON COLD WATER SUPPLY AND PIPE WASTE TO FLOOR SINK, MAKE WASTE PIPE CONNECTION TO FLOOR SINK SO THE ICE MACHINE CAN BE DISCONNECTED AND MOVED FOR CLEANING. PROVIDE ASSE 1022 COMPLIANT BACKFLOW PREVENTER AT EACH.
- P-9 COFFEE & TEA DISPENSER: FURNISHED AND INSTALLED UNDER ANOTHER SECTION, ROUGH AND COMPLETE. PROVIDE ASSE 1022 COMPLIANT BACKFLOW PREVENTER AT EACH.
- P-10 DRINK DISPENSER: FURNISHED AND INSTALLED UNDER ANOTHER SECTION, ROUGH AND COMPLETE. PROVIDE ASSE 1022 COMPLIANT BACKFLOW PREVENTER AT EACH.
- P-11 MOP SINK: FLORESTONE MODEL MSR-3624 MOLDED MOP RECEPTOR COMPLETE WITH T&S BRASS FAUCET #B-0665-BSTR FAUCET.
- P-12 HOT WATER DISPENSER: FURNISHED AND INSTALLED UNDER ANOTHER SECTION, ROUGH AND COMPLETE.
- P-13 WATER HEATER — RHEEM HEAVY DUTY COMMERCIAL ELECTRIC # ES-85, — 24KW, 85 GALLON STORAGE



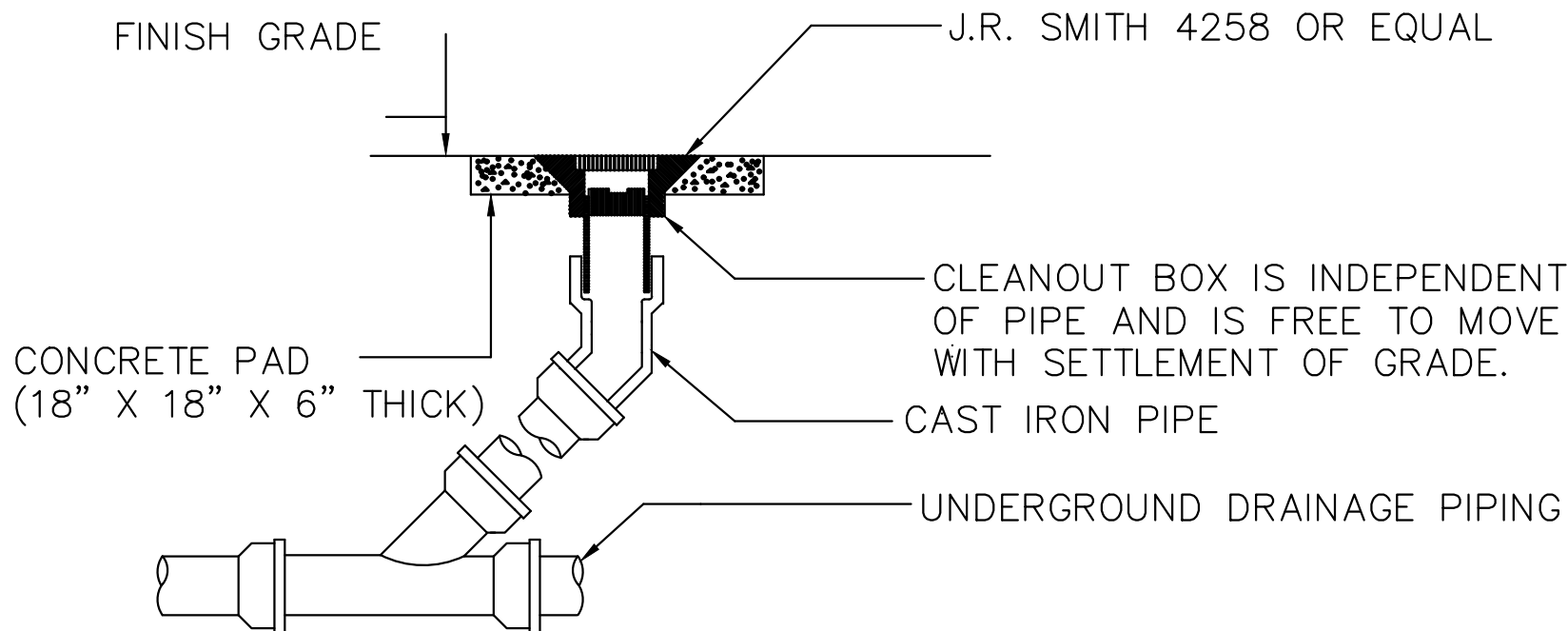
FLOOR SINK DETAIL  
NO SCALE



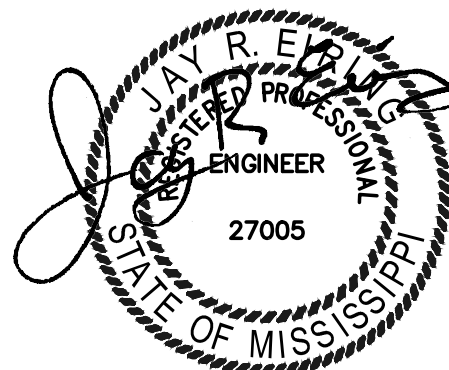
CLEAN OUT DETAIL  
NO SCALE



HUB DRAIN DETAIL  
NO SCALE



DETAIL of CLEANOUT to GRADE  
NO SCALE



OCTOBER 20, 2020

Jay R. Eiring  
Engineer  
802 Mountain Lake Ct  
Prattville, AL 36067  
PH:205-213-8875  
PROJECT #20-014

PERMIT ISSUE

No.	Description	Date
10-23-20		
20-2630		

Jack's Family Restaurants  
Southern Charm (SC-68)  
WALNUT, MISSISSIPPI

P1.1

SCHEDULES, DETAILS AND  
RISER DIAGRAMS - PLUMBING

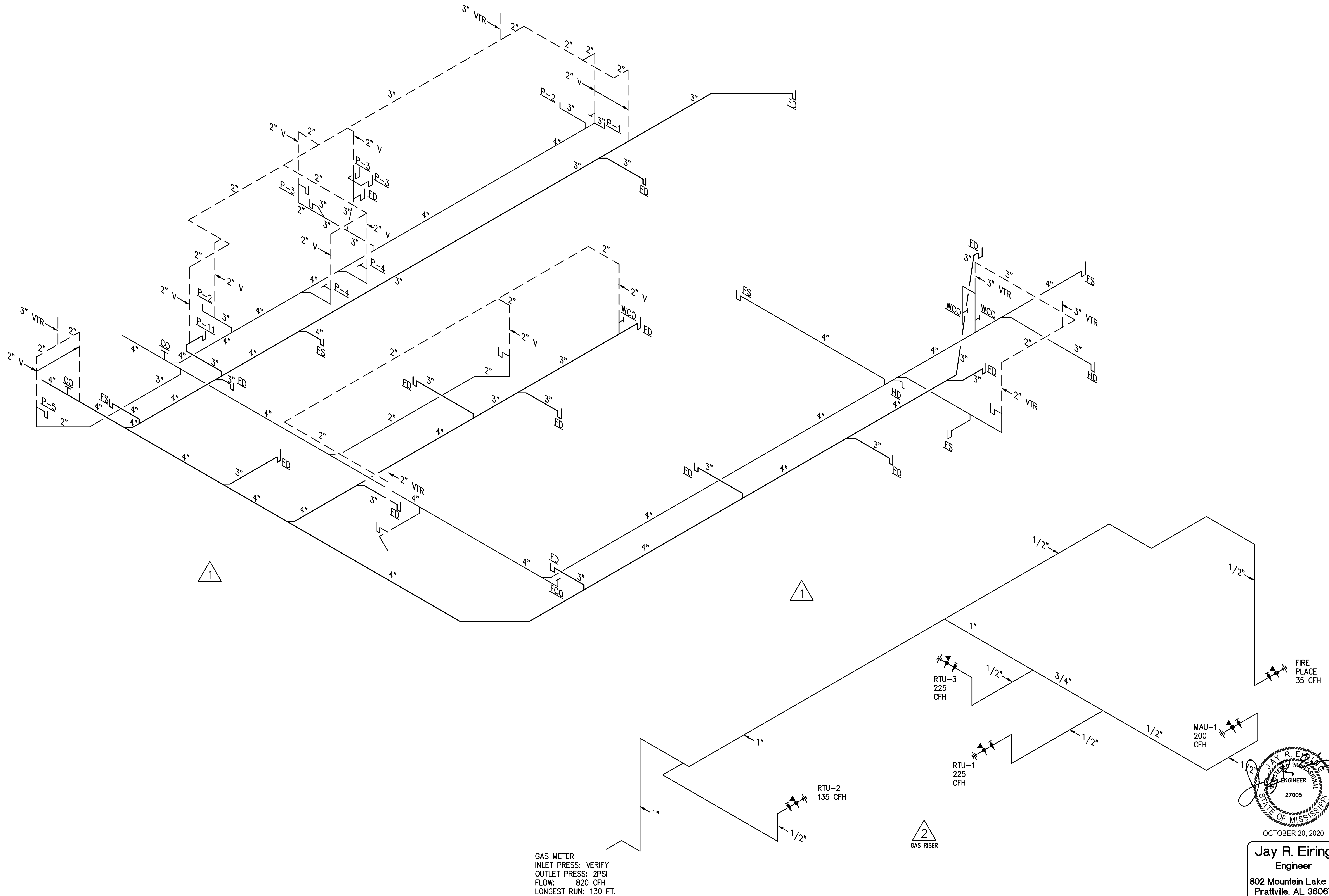
RODNEY L. SARTAIN - ARCHITECT

1909 COURTNEY DR. HOMEWOOD, ALABAMA 35209

OFFICE: (205) 879-5458  
FAX: (205) 879-5460  
EMAIL: rls@rlsdesigngroup.com

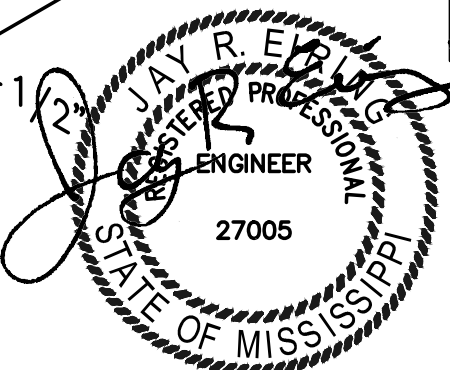


Z:\Rodney Sartain\20-296 Jacks - Walnut M5 SC-60\20-296 MECH.dwg - eimr



GAS METER  
INLET PRESS: VERIFY  
OUTLET PRESS: 2PSI  
FLOW: 820 CFH  
LONGEST RUN: 130 FT.

2  
GAS RISER



OCTOBER 20, 2020  
**Jay R. Eiring**  
Engineer  
802 Mountain Lake Ct  
Prattville, AL 36067  
PH:205-213-8875  
PROJECT #20-014

PERMIT ISSUE

No.	Description	Date
10-23-20		
20-2630		

**Jack's Family Restaurants**  
Southern Charm (SC-68)  
WALNUT, MISSISSIPPI

P1.2

SCHEDULES, DETAILS AND  
RISER DIAGRAMS - PLUMBING

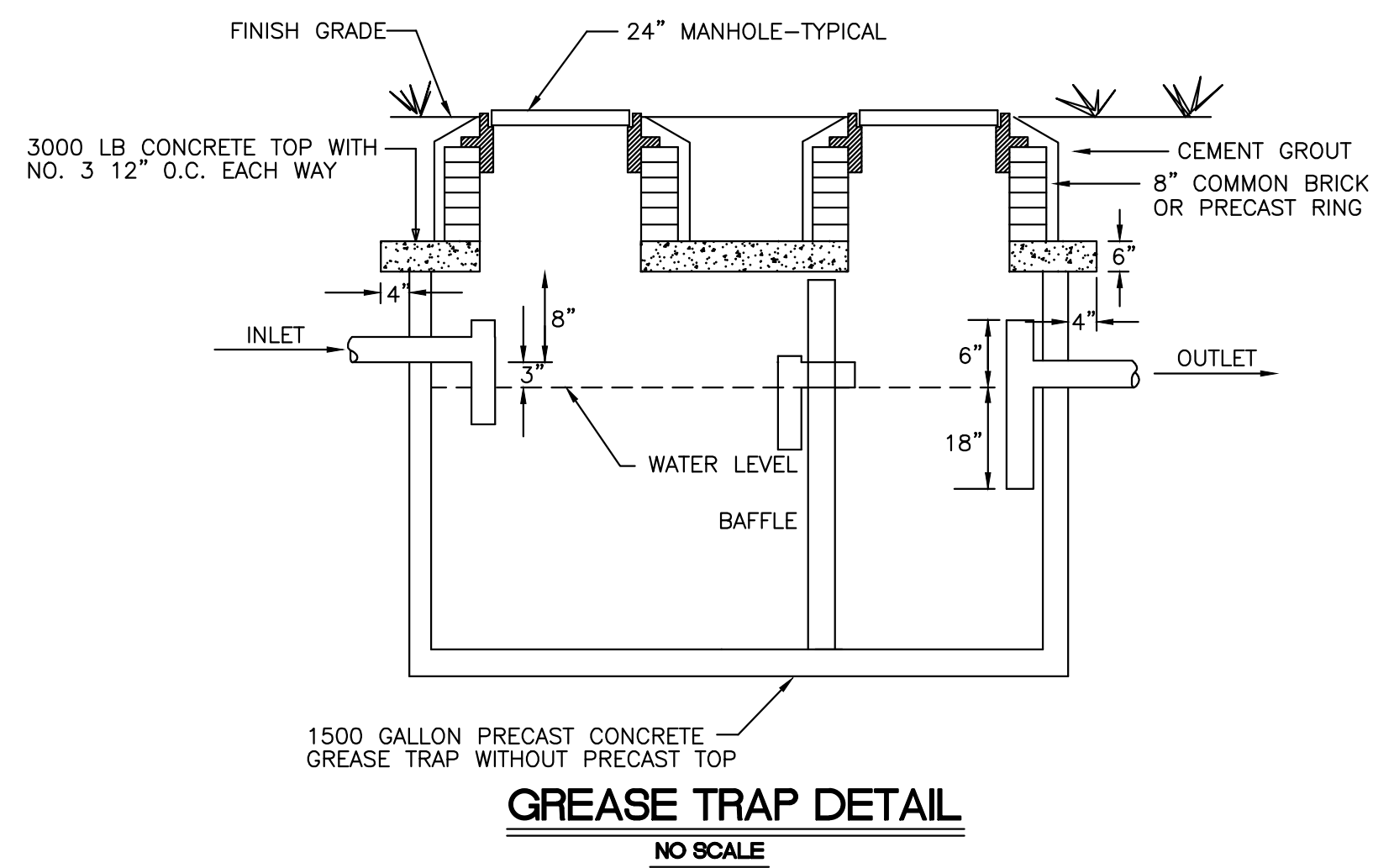
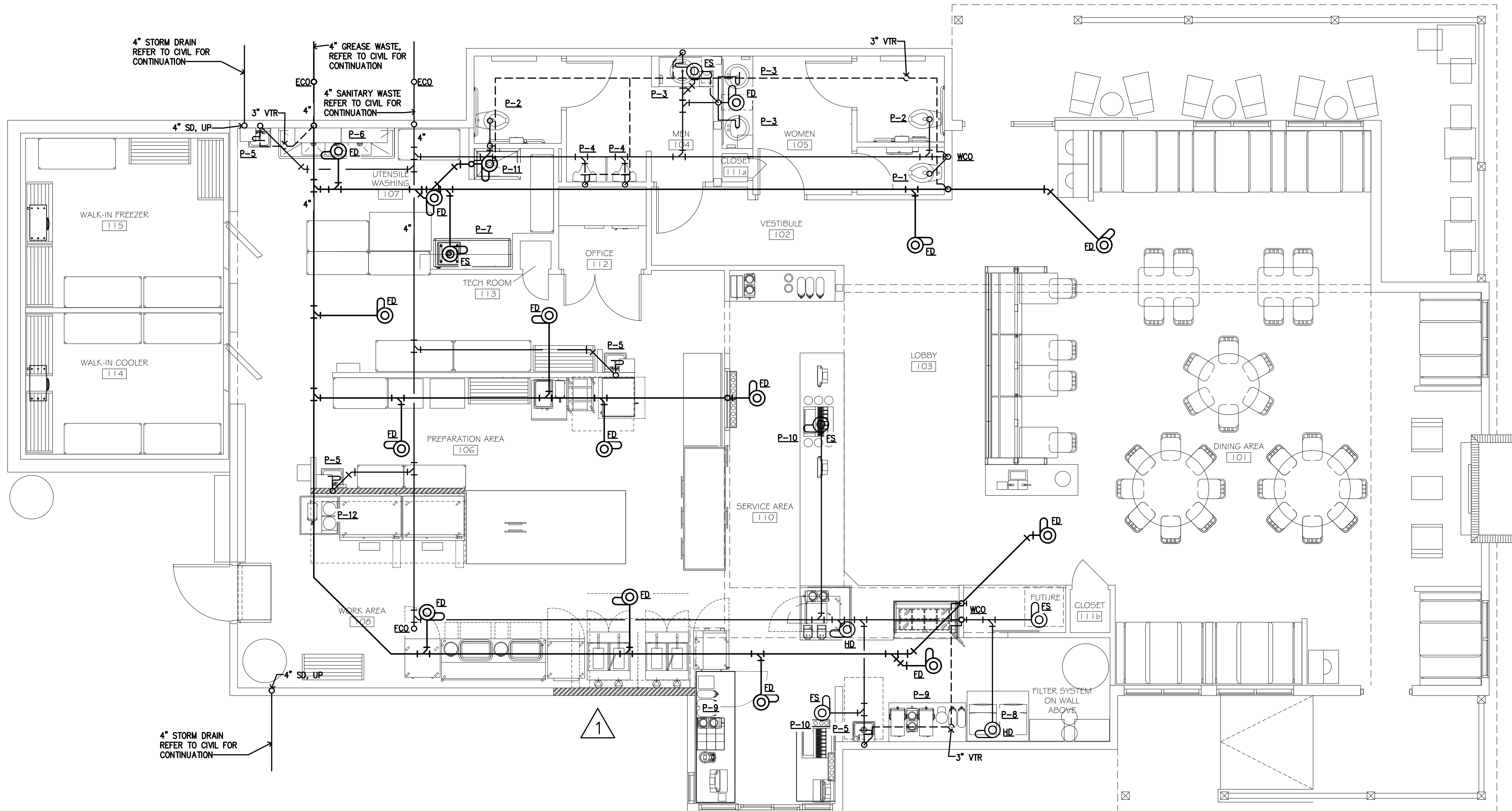
**RODNEY L. SARTAIN - ARCHITECT**

OFFICE: (205) 879-5458  
FAX: (205) 879-5460  
EMAIL: rls@rlsdesigngroup.com

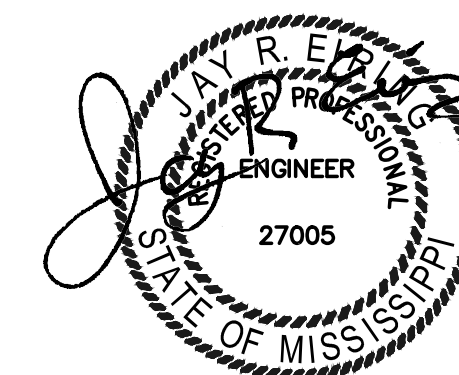
1909 COURTNEY DR.    HOMEWOOD, ALABAMA    35209



Z:\Rodney Sartain\20-296 Jack's - Walnut M5 SC-60\20-296 MECH.dwg - eimr



CONSTRUCTION FLOOR PLAN - NON-PRESSURE PIPING  
1/4" = 1'-0"



OCTOBER 20, 2020

**Jay R. Eiring**  
Engineer  
802 Mountain Lake Ct  
Prattville, AL 36067  
PH:205-213-8875  
PROJECT #20-014

PERMIT ISSUE

No.	Description	Date
10-23-20		
20-2630		

**P2.1**  
**Jack's Family Restaurants**  
Southern Charm (SC-68)  
WALNUT, MISSISSIPPI

**FLOOR PLAN -**  
**NON-PRESSURE PIPING**

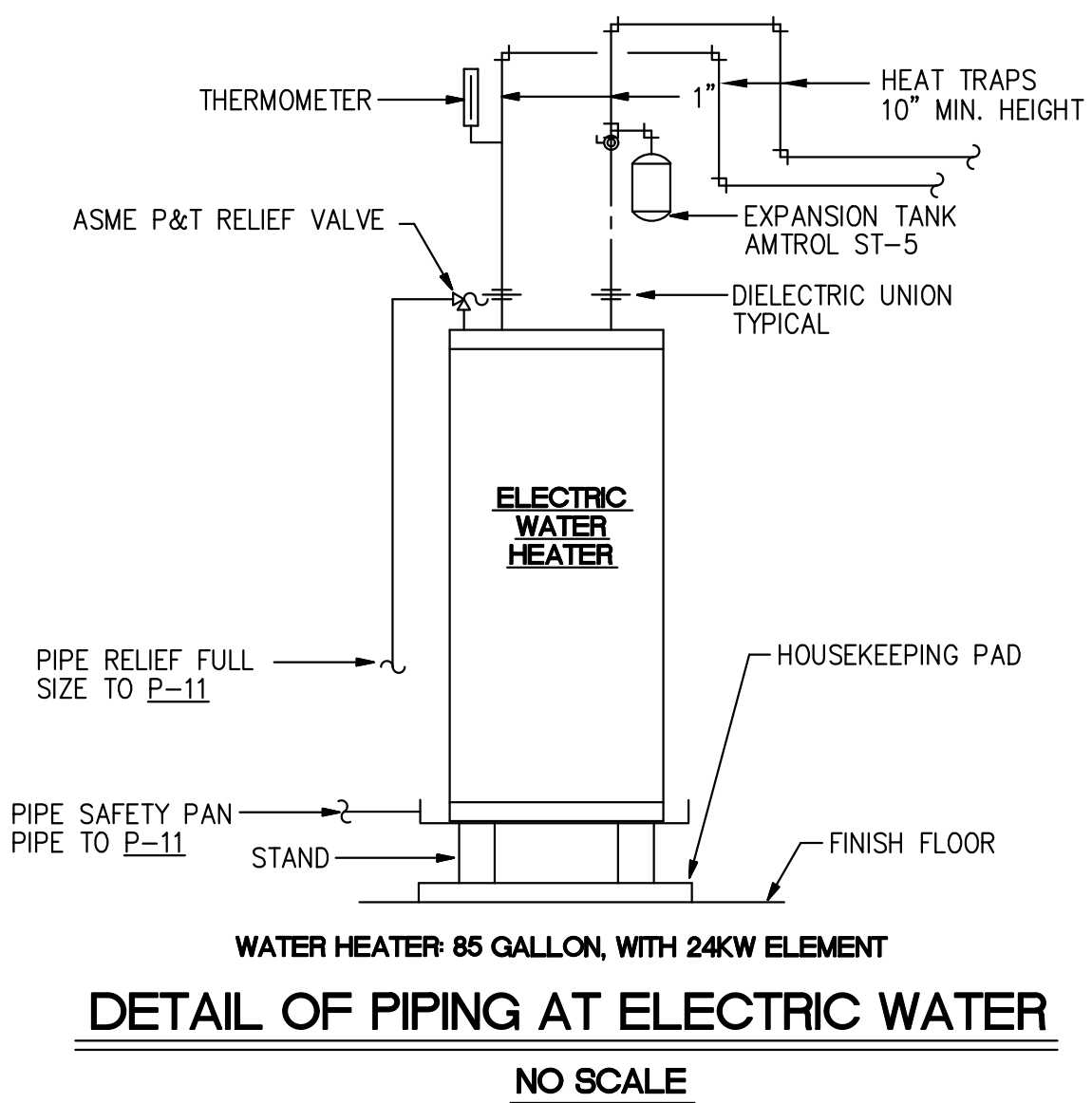
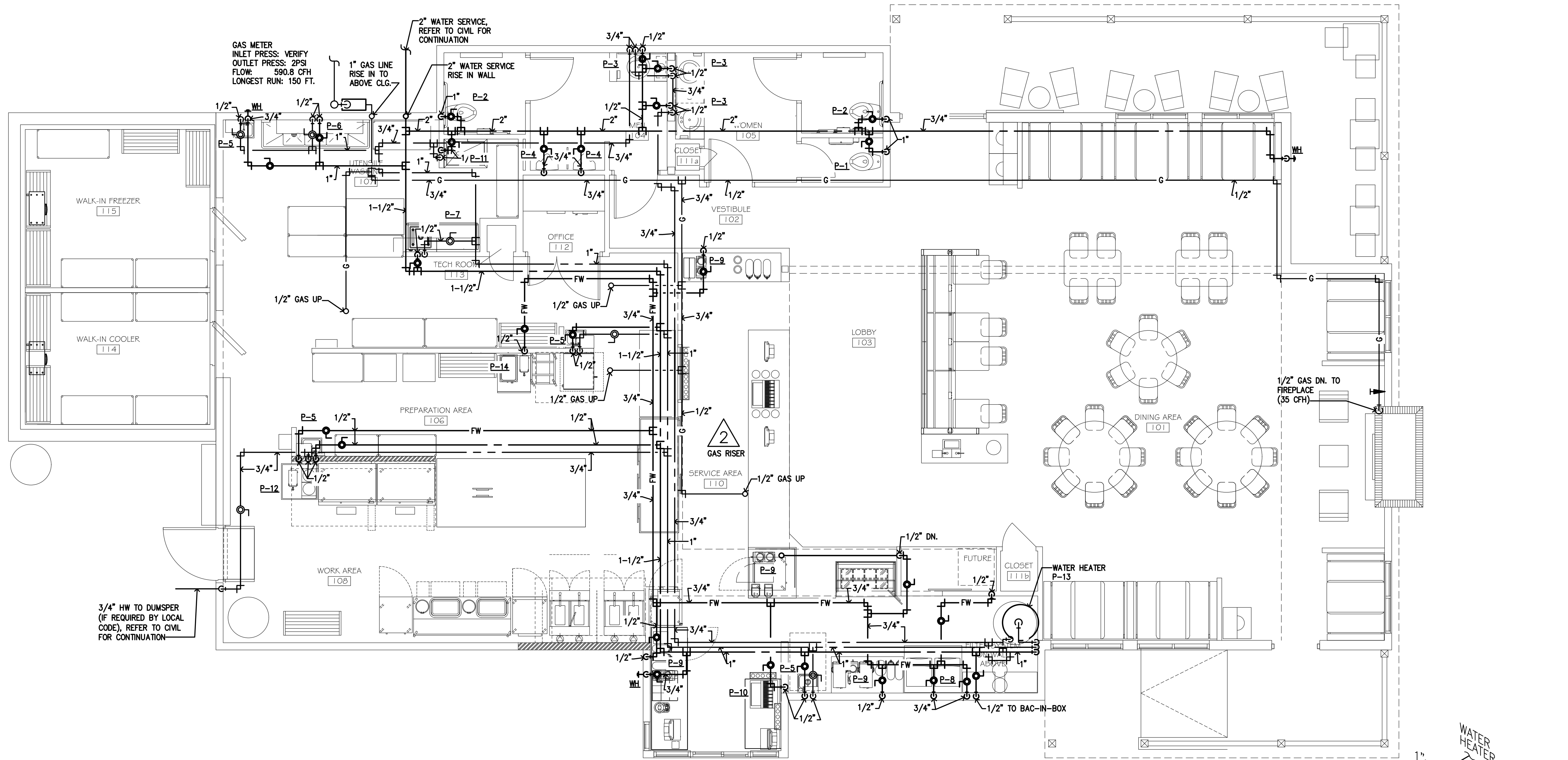
**RODNEY L. SARTAIN - ARCHITECT**

1909 COURTNEY DR.    HOMEWOOD, ALABAMA    35209

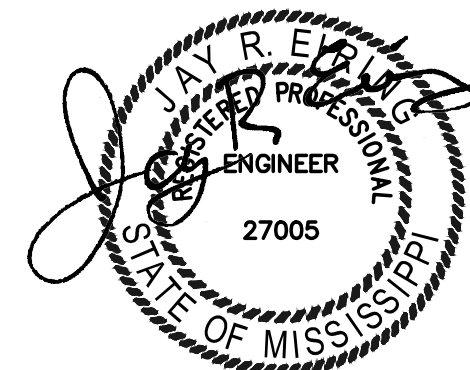
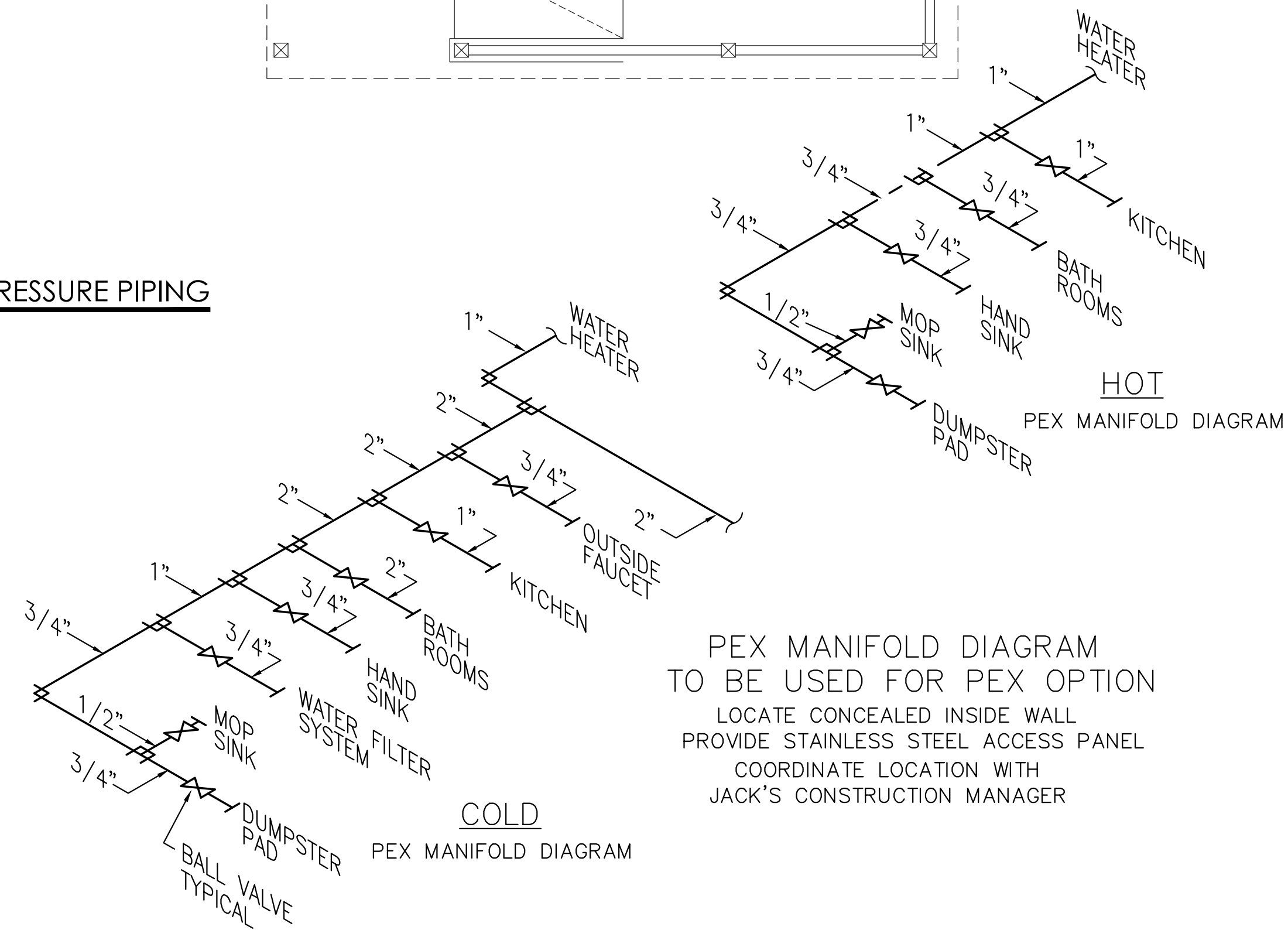
OFFICE: (205) 879-5458  
FAX: (205) 879-5460  
EMAIL: rls@rlsdesigngroup.com



Z:\Rodney Sartain\20-296 Jacks - Walnut M5 SC 60x20-296 MECH.dwg - eimr



CONSTRUCTION FLOOR PLAN - PRESSURE PIPING  
1/4" = 1'-0"



OCTOBER 20, 2020  
**Jay R. Eiring**  
Engineer  
802 Mountain Lake Ct  
Prattville, AL 36067  
PH:205-213-8875  
PROJECT #20-014

PERMIT ISSUE

No.	Description	Date
10-23-20		
20-2630		

**Jack's Family Restaurants**  
Southern Charm (SC-68)  
WALNUT, MISSISSIPPI

P2.2

FLOOR PLAN - PRESSURE PIPING

**RODNEY L. SARTAIN - ARCHITECT**  
1909 COURTNEY DR.    HOMEWOOD, ALABAMA    35209

OFFICE: (205) 879-5458  
FAX: (205) 879-5460  
EMAIL: rls@rlsdesigngroup.com