

in the summer of 1964. The  
line of travel was from W. to  
P. and the line of travel was  
of the line of travel was  
from the line of travel was

15	30	71.78
16		66.00
17		208.56
18		181.50
19		341.88
20		97.02
21		
22		178.4
23		117.96
24		
25		

Found old 2nd fln  
104 77 and 104  
AT

W. L. EDWARDS

MAP of the Subdiv. of  
of the

M. SHOBLO FRA

DRUGS FROM THE "GOLDEN AGE OF DRUGS"  
BEING NOT THE SAME AS THE "GOLDEN AGE OF DRUGS"  
FROM THE "GOLDEN AGE OF DRUGS" OF THE  
IN THE "GOLDEN AGE OF DRUGS" OF THE  
OF THE "GOLDEN AGE OF DRUGS" OF THE

Zemon, Blum, et al.

~~5010101~~ C. nebulosus, etc.

Surveyed Feb 19

AT 1225-4011

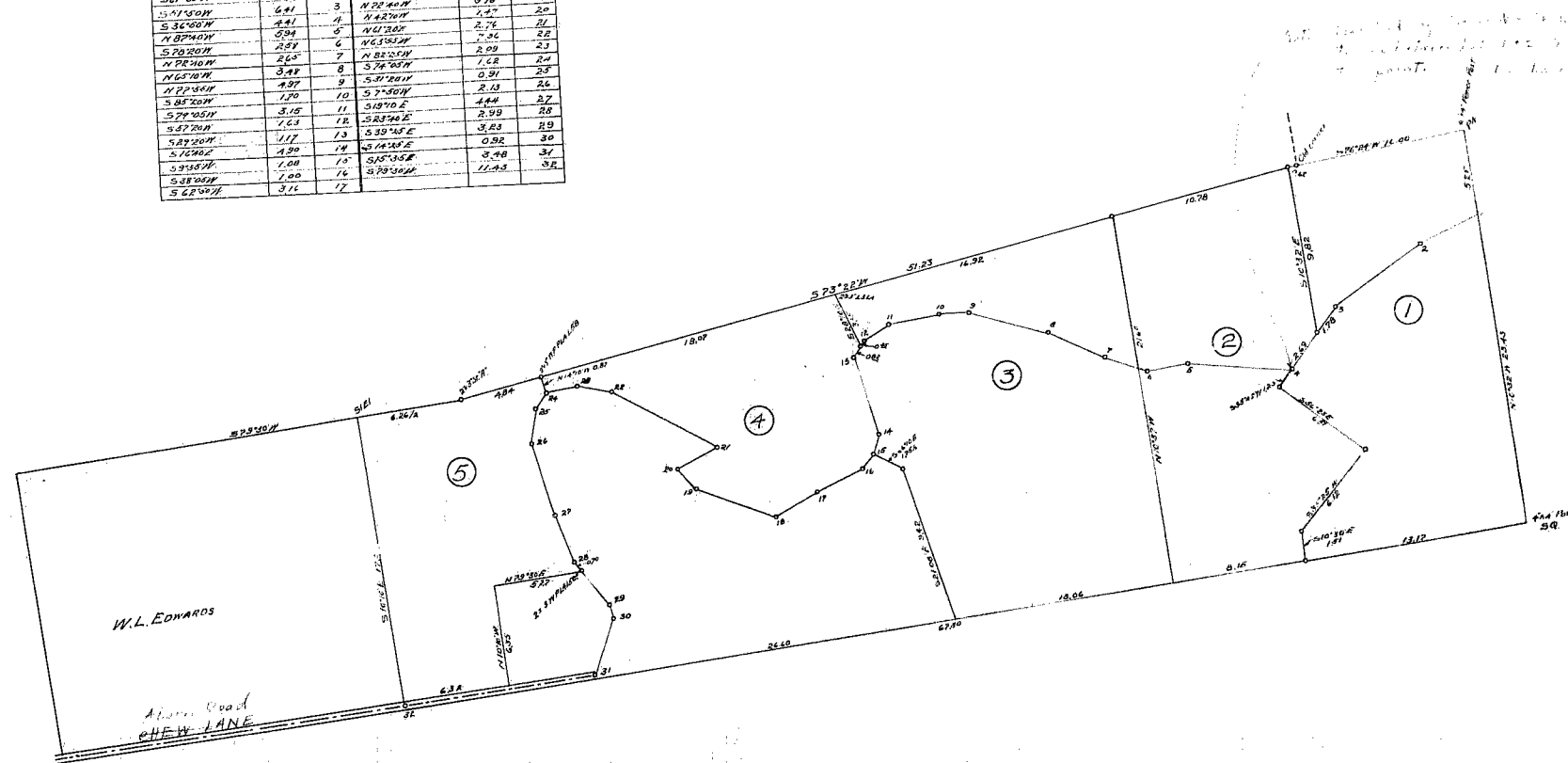
Score 4 CH

1818  
1818



COURSE TABLE

Course	Chs	1/4 Sec	Course	Chs	1/4 Sec
S 61° 00' W	3.09	2	S 56° 20' W	2.75	18
S 41° 50' W	4.41	3	N 22° 40' W	3.19	19
S 36° 00' W	4.41	4	N 42° 20' W	1.52	20
N 37° 40' W	5.94	5	N 61° 30' E	2.76	21
S 20° 20' W	2.81	6	N 63° 30' E	2.52	22
N 22° 40' W	2.65	7	N 81° 30' W	2.09	23
N 65° 10' W	3.41	8	S 74° 00' W	1.62	24
N 77° 30' W	4.97	9	S 81° 20' W	0.91	25
S 85° 20' W	1.70	10	S 71° 30' W	2.13	26
S 77° 00' W	3.15	11	S 19° 10' E	4.44	27
S 67° 20' W	1.63	12	S 23° 40' E	2.99	28
S 27° 20' W	1.17	13	S 39° 40' E	3.83	29
S 16° 20' E	1.90	14	S 59° 10' E	0.92	30
S 38° 00' W	1.08	15	S 65° 30' E	3.40	31
S 62° 00' W	0.16	16	S 79° 30' W	11.25	32
		17			



M. SHOBLA TRACT.  
PARTITION SUIT No 2472  
See 16-17-4 Chs H.T. HERRMANN L.F.  
Feb. 1900

# MAP

ROBERTS ELM TREE  
SUBDIVISION

IN THE

CITY OF SAN JOSE

CALIFORNIA

Hereby certify this to be a correct one  
 of a survey made by me.  
 Dated at Bareilly, in the District of Bareilly, the 15th April 1865.

Surveyed April 1880  
By E. L. WARFIELD  
Licensed Surveyor  
San Jose, California

IN WITNESS WHEREOF, I have hereunto set my hand and  
affixed my Official Seal at my office in the County and State  
aforesaid, the day and year in this certificate last above written.

History published in and for the County  
of Santa Clara, State of California.

State of California  
County of Santa Clara

2. On the 17<sup>th</sup> day of April in the year 1839 one thousand three hundred and ninety six, before me, John Pollock, a Notary Public in and for said County and State, residing therein, duly commissioned and sworn, personally appeared LEO MONTGOMERY, of whom to me he is the son of the GARDEN CITY MAN and WOOD COMPANY, a corporation that executed the within instrument of mortgage, and acknowledged to me that such corporation executed the same as such corporation is incorporated in me that such corporation executed the same as such corporation.

IN WITNESS WHEREOF, I have hereunto set my hand and affixed my  
Great Seal of my Office in the said County of said, Clara the day and year  
above written.

STATE OF CALIFORNIA  
COUNTY OF SANTA CLARE

[illegible]

IN WITNESS WHEREOF, I have set unto and my hand and affixed the Great Seal of my office, in the said County of Santa Clara, this 1<sup>st</sup> Day of May, A. D. 1901.

STATE OF CALIFORNIA

[illegible]

MISSION STREET

19<sup>th</sup> Sept

4<sup>th</sup> Street17<sup>th</sup> Street

STATE OF CALIFORNIA

COUNTY OF SANTA CRUZ. I, the hereby certified that I found an original filed by the Board of Supervisors of the County of Santa Cruz, and approved by the Board of Supervisors in the City of Santa Cruz, and containing a true and correct copy of all acts and resolutions of the Board of Supervisors of the County of Santa Cruz, and approved by the Board of Supervisors, which are, in substance, as follows, to-wit:

By Water as Witnessed: That, for and of the Command  
and the Official Seal of said Board of Supervisors, the 2<sup>nd</sup>  
day of May, A.D. 1906.

Nov 6<sup>th</sup> 1888

P181



*Amended Map of*  
**PALO ALTO PARK**  
*Being Subdivision No. 3 of the*  
**Seale Addition to the**  
*Town of Palo Alto*

Sheet No. 1

