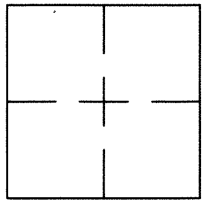


CORNER RECORD

Document Number CR 9416

City of EDEN TOWNSHIP County of ALAMEDA, California

Brief Legal Description PIN MONUMENT LOCATED WITHIN THE INTERSECTION OF VIA OWEN AND VIA AMIGOS



CORNER RECORD

Government Corner ☐ Control ☒
Meander ☐ Property ☐
Rancho ☐ Other ☐
Date of Survey 11/11/16

COORDINATES
(Optional)

N. 2070832±
E. 6085425±
Zone _____ Datum _____
Elev. _____

Corner — Left as found ☒ Found and tagged ☐ Established ☐ Reestablished ☐ Rebuilt ☐

Identification and type of corner found: Evidence used to identify or procedure used to establish or reestablish the corner:
FOUND PIN IN CONCRETE IN MONUMENT WELL.

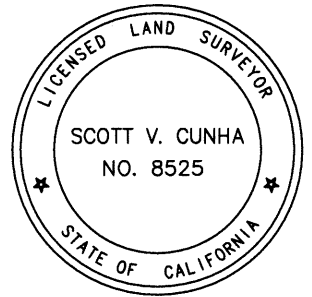
THIS POINT WAS REFERENCED PRIOR TO A CONSTRUCTION PROJECT IN THE VICINITY.

A description of the physical condition of the monument as found and as set or reset:
FOUND AND SET POINTS AS SHOWN ON PAGE 2.

THE TIES SHOWN HEREON ARE FOR THE PURPOSE OF PERPETUATING FOUND MONUMENTATION.
NO CLAIM IS MADE AS TO THE RELATIONSHIP OF THE POINTS OR LINES SHOWN HEREON TO
TRUE BOUNDARY LOCATIONS.

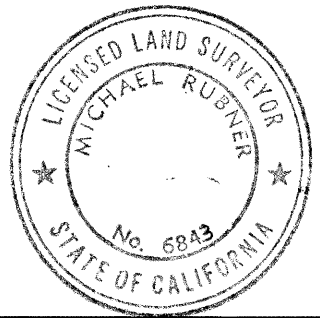
SURVEYOR'S STATEMENT

This Corner Record was prepared by me or under my direction in conformance with
the Land Surveyors' Act on NOVEMBER 28, 2016.
Signed Scott V. Cunha L.S. Number LS 8525
SCOTT V. CUNHA



COUNTY SURVEYOR'S STATEMENT

This Corner Record was received 5 DECEMBER 2016 and examined
and filed 3 FEBRUARY 2017.
Signed Michael Rubner Title COUNTY SURVEYOR



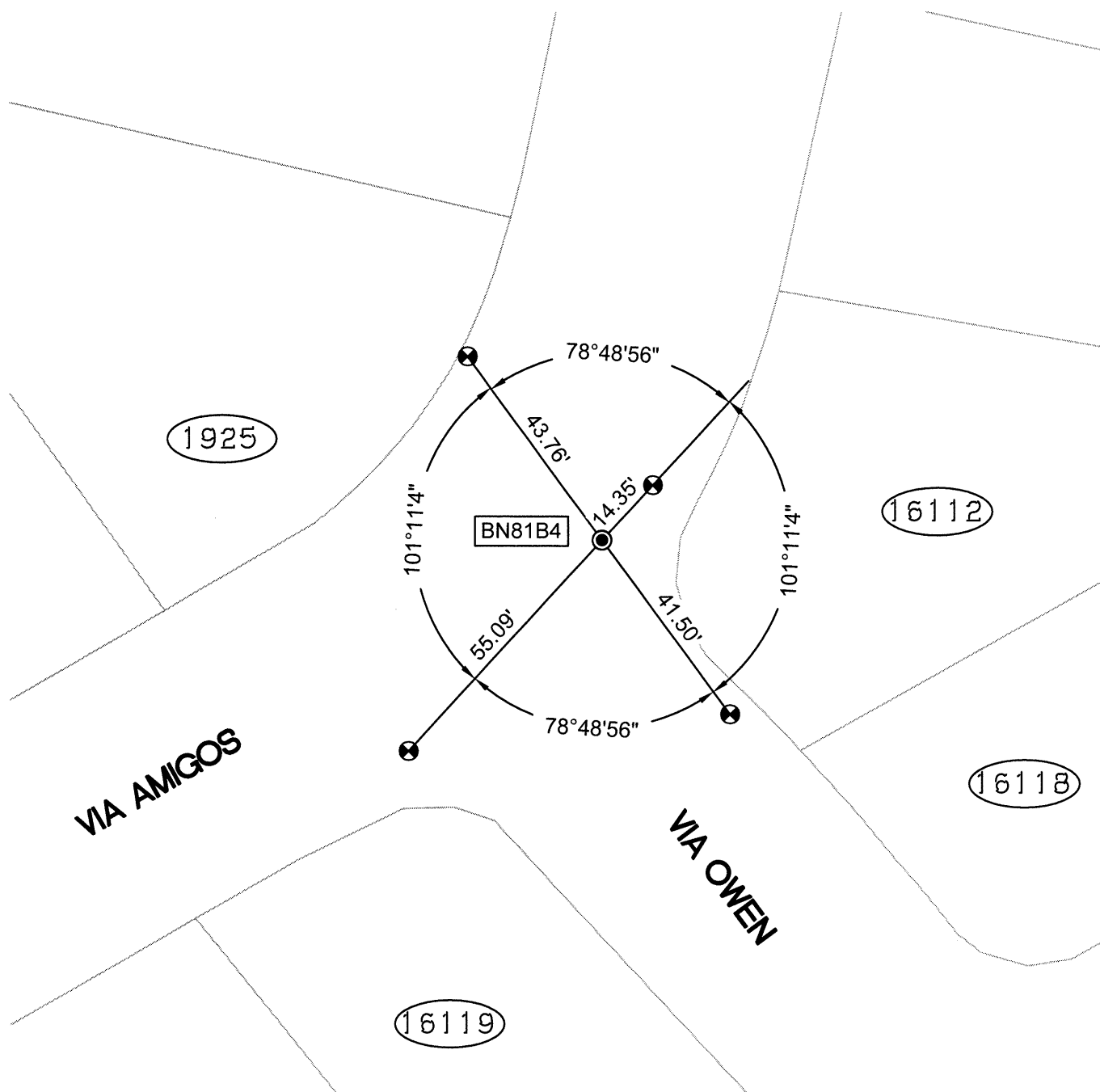
County Surveyor's Comment _____

SPEC-2315-PRE

SCALE: 1"=30'

LEGEND

- FOUND IRON PIN IN CONCRETE IN MONUMENT WELL
- ⊗ SET CUT CROSS IN WALK
- ✕ SET CUT CROSS IN CURB
- ✕ SET MAG AND SHINER
- SET REBAR & CAP STAMPED "CEI RP"
- AA##A# ALAMEDA COUNTY MONUMENT ID
- 19592 REFERENCE STREET ADDRESS



216178-milo owen karl-CR02