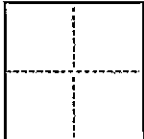


CORNER RECORD

CR 20

COUNTY OF ALAMEDA T. 3S R. 2W MOUNT DIABLO MERIDIAN CALIFORNIA  
CORNER TYPE: GOV'T. CORNER ☐ MEANDER ☐ RANCHO ☐ CONTROL ☐ OTHER ☐  
CORNER IDENTIFICATION — DATE OF VISIT JULY 5 1983



CORNER — LEFT AS FOUND ☐ FOUND AND TAGGED ☐ REESTABLISHED OBLITERATED CORNER ☒ REBUILT ☐

PHYSICAL DESCRIPTION OF CORNER FOUND; EVIDENCE AND METHOD USED TO IDENTIFY OR REESTABLISH

NO POINT FOUND. REESTABLISHED MONUMENT LINE INTERSECTIONS FROM DATA SHOWN  
ON MAP OF TRACT 2240 AND TRACT 879 ALONG WITH THE FIELD NOTES FROM  
THE CITY OF HAYWARD ENGINEERS OFFICE.

PHYSICAL DESCRIPTION OF MONUMENTS REBUILT OR PERPETUATED

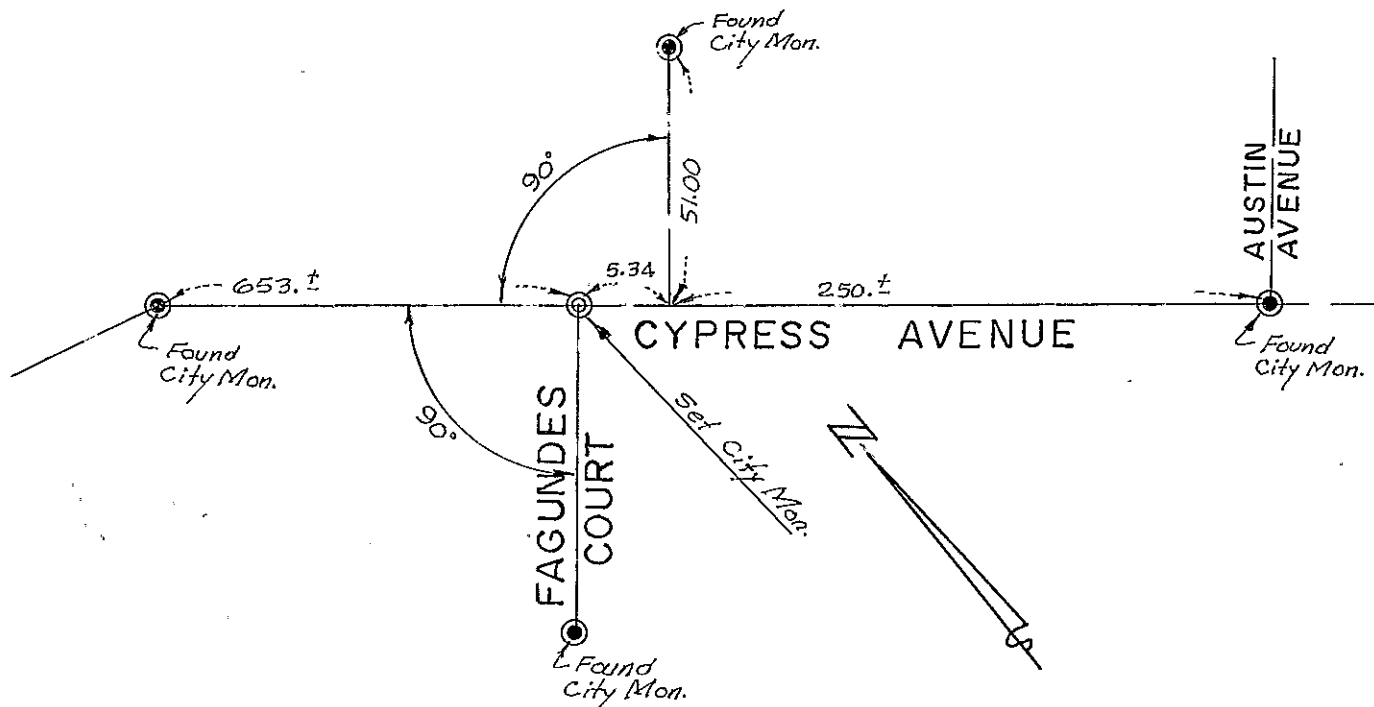
SEE SKETCH BELOW

SET STANDARD CITY OF HAYWARD CITY MONUMENT

CALIFORNIA COORDINATE SYSTEM ORDER: FIRST ☐ SECOND ☐ THIRD ☐  
STATIONS USED: NGS (USC & GS) ☐ STATE ☐ COUNTY ☐ OTHER ☐ STATION \_\_\_\_\_ STATION \_\_\_\_\_  
ZONE III ELEVATION 100+ NORTHINGS (Y) 423,800 EASTINGS (X) 1,540,300

(Fold)

SKETCH: (Include reference tie or witness points, remarks and topo of area)



THIS CORNER RECORD WAS PREPARED BY OR UNDER MY DIRECTION IN CONFORMANCE WITH THE LAND SURVEYORS ACT ON \_\_\_\_\_

SIGNATURE: George F. Buscher  
L.S. or R.C.S. No: NO. 3456

Seal: **State of California**  
**George F. Buscher**  
**NO. 3456**

**COUNTY SURVEYOR'S CERTIFICATE**

THE CORNER RECORD WAS RECEIVED July 15 1983  
AND EXAMINED AND FILED July 18 1983  
BY: Ronald F. Zornsen  
TITLE: Deputy County Surveyor

DOCUMENT No. 83-1

STATEMENT ON BACK OF SHEET  
BK 1 C.R. pg 20 YES ☐ NO ☒