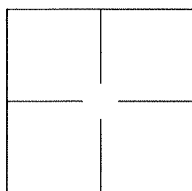


# CORNER RECORD

Agency Index BK 140 PG 13Document Number CR 14622City of UNINCORPORATED AREACounty of ALAMEDA, CaliforniaBrief Legal Description ALAMEDA COUNTY MONUMENT DC73F3

## CORNER TYPE

Government Corner ☐ Control ☐  
Meander ☐ Property ☐  
Rancho ☐ Other ☒

Date of Survey 2020-08-03

## COORDINATES (Optional)

N. \_\_\_\_\_ E. \_\_\_\_\_

Elevation \_\_\_\_\_

Units Metric ☐ U.S. Survey Foot ☐

Horizontal Datum \_\_\_\_\_

Zone \_\_\_\_\_ Epoch Date \_\_\_\_\_

Vertical Datum: \_\_\_\_\_

☐ Complies with Public Resources Code §§8801-8819☐ Complies with Public Resources Code §§8890-8902PLS Act Ref.: ☐ 8765(d) ☒ 8771 ☐ 8773

Other: \_\_\_\_\_

Corner/ Monument: ☒ Left as found ☐ Established ☐ Rebuilt ☒ Pre-Construction  
☐ Found and tagged ☐ Reestablished ☒ Referenced ☐ Post-Construction

Narrative of corner identified and monument as found and set or reset:

☒ See sheet #2 for description(s):

ALAMEDA COUNTY MONUMENT DC73F3

## SURVEYOR'S STATEMENT

This Corner Record was prepared by me or under my direction in conformance with

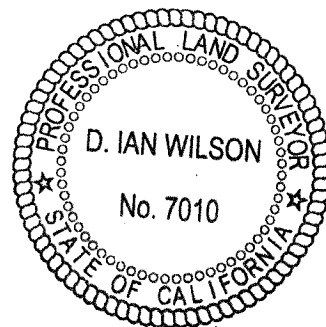
the Professional Land Surveyor's Act on 30 November, 2020.Signed [Signature] P.L.S. or R.C.E. No.: 8040

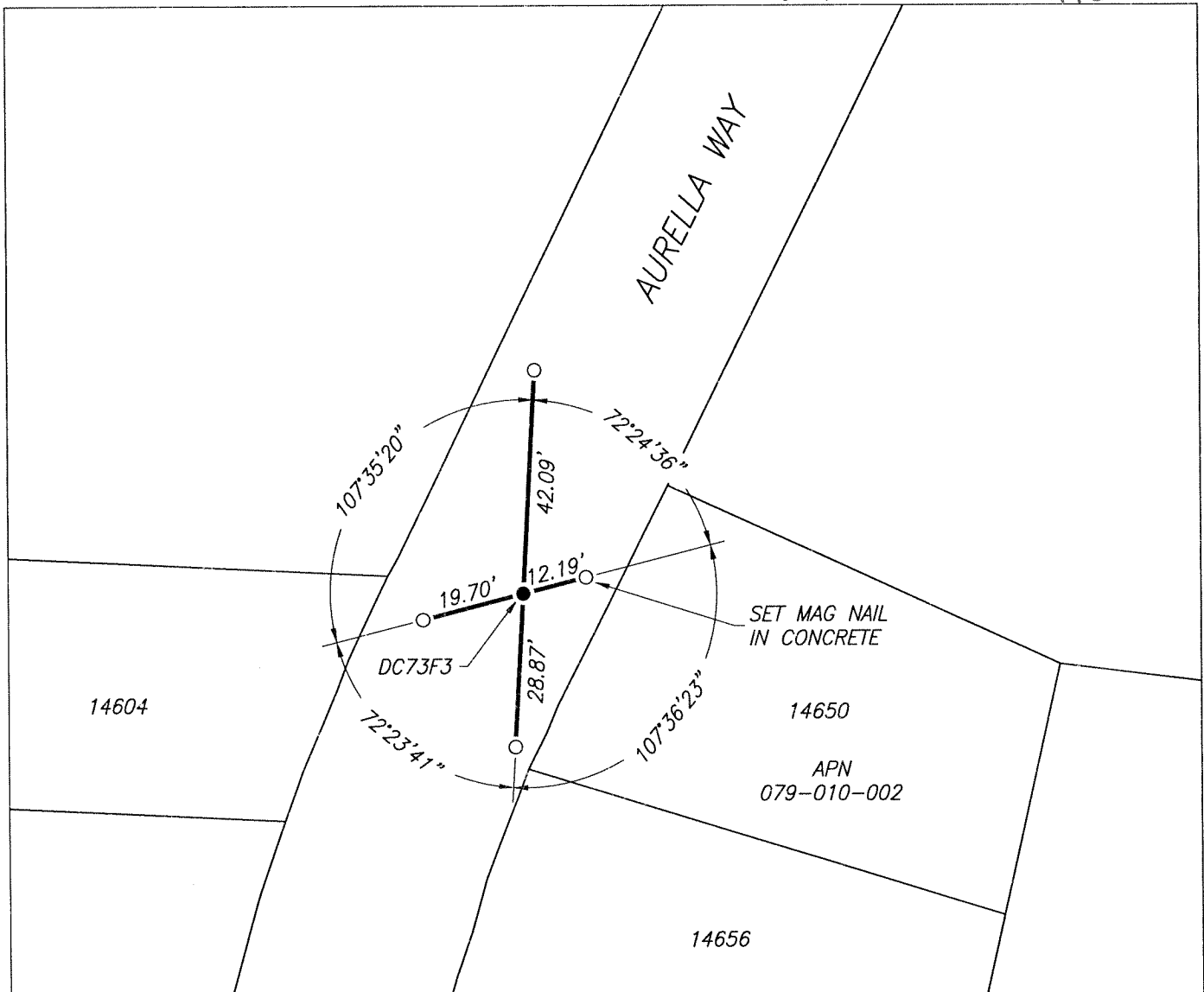
## COUNTY SURVEYOR'S STATEMENT

This Corner Record was received \_\_\_\_\_, \_\_\_\_\_ and examined

and filed AUG 14 2021.Signed W. Dan Wilson P.L.S. or R.C.E. No.: 7010Title ALAMEDA COUNTY SURVEYOR

County Surveyor's Comment \_\_\_\_\_





## LEGEND

- FOUND 2.5" BRASS DISK WITH 1/8" NIPPLE, IN MONUMENT WELL, STAMPED "ALAMEDA COUNTY SURVEYOR" "4+18 EC 2002", PER (A)

- SET TEMPORARY 3/4" IRON PIPE WITH CAP STAMPED BME CONTROL

14650 REFERENCE STREET ADDRESS

APN ASSESSORS PARCEL NUMBER

SCALE 1" = 30'

## REFERENCES

- (A) CORNER RECORD 1875, FILED FOR RECORD ON NOVEMBER 04, 2003, IN BOOK 16 OF CORNER RECORDS, AT PAGE 68, ALAMEDA COUNTY RECORDS