

All ideas, designs, arrangement and plans indicated or represented by this drawing are the property of Panda Express Inc. and were created for use on this specific project. None of these ideas, designs, arrangements or plans may be used by or disclosed to any person, firm, or corporation without the written permission of Panda Express Inc.

REVISIONS:


ISSUE DATE:

1	04.29.2021 ISSUE FOR PERMIT
2	06.04.2021 ISSUE FOR BID

DRAWN BY: JDV

PANDA PROJECT #: - S8-22-D8135  
C&P PROJECT #: - 2200775



2600 Maitland Center Pkwy. Maitland, FL 32751  
P (407) 661-9100  
F (407) 661-9101  
**www.cpa.com**  
Florida Certified Public Accountants 444 CPE0092M

06.04.2021

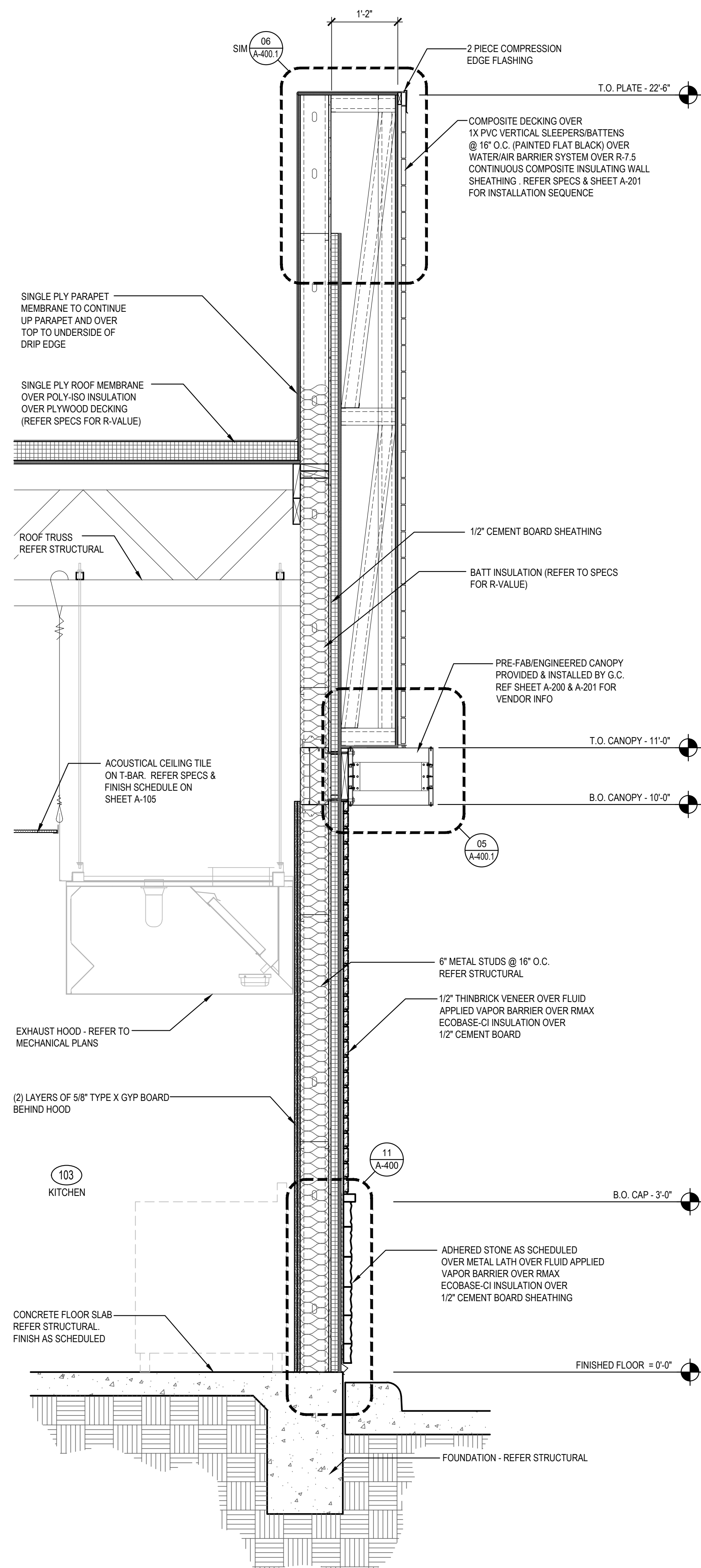
PANDA EXPRESS

TRUE WARM AND WELCOME 2300  
SKYBROOKE BOULEVARD & STATE ROAD 54  
LUTZ, FL 33558

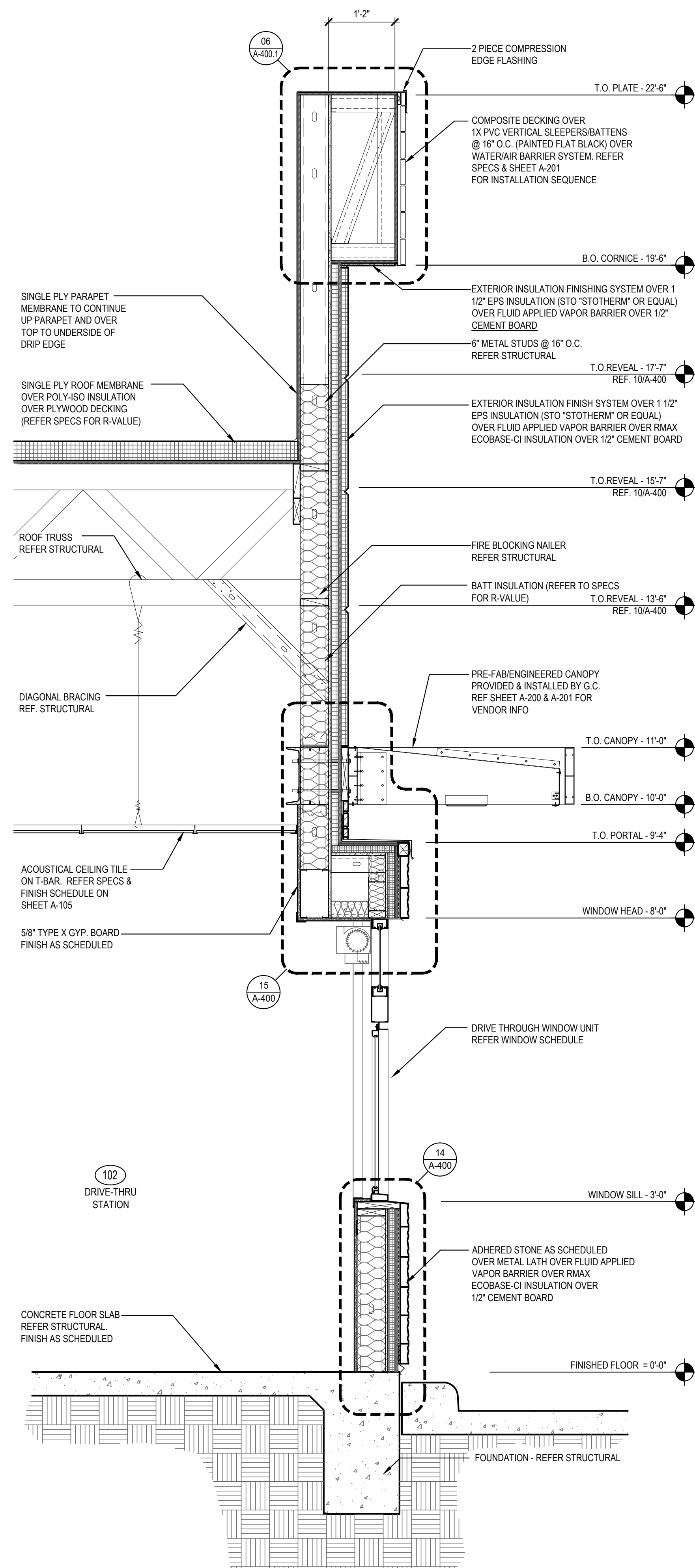
A-304

WALL SECTIONS

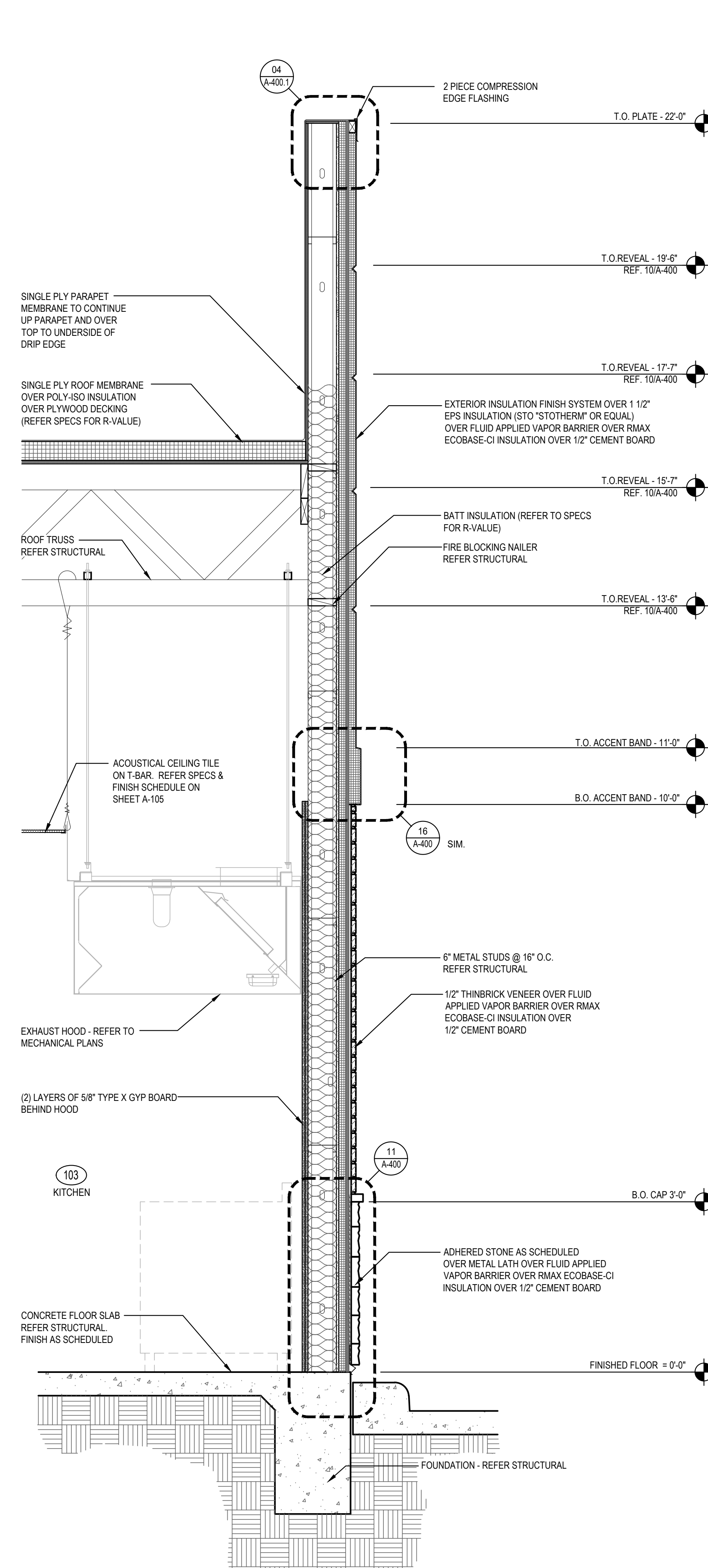
TRUE WARM & WELCOME 2300 R4



SECTION	1
Scale= 3/4" = 1'-0"	A-304



SECTION	2
Scale= 3/4" = 1'-0"	A-304



SECTION	3
Scale= 3/4" = 1'-0"	A-304