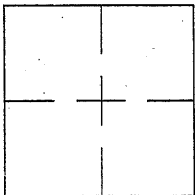


CORNER RECORD

Document Number CR 5949City of CASTRO VALLEYCounty of ALAMEDA, CaliforniaBrief Legal Description IRON PIN MONUMENT LOCATED WITHIN CLIFTON WAY.

CORNER RECORD

Government Corner ☐ Control ☒
 Meander ☐ Property ☐
 Rancho ☐ Other ☐
 Date of Survey 10/29/13

COORDINATES
(Optional)

N. _____
 E. _____
 Zone _____ Datum _____
 Elev. _____

Corner — Left as found ☒ Found and tagged ☐ Established ☐ Reestablished ☐ Rebuilt ☐

Identification and type of corner found: Evidence used to identify or procedure used to establish or reestablish the corner:
FOUND IRON PIN IN MONUMENT WELL LOCATED WITHIN CLIFTON WAY.

(REFERENCE ADDRESS: 18515 CLIFTON WY)

THIS POINT WAS REFERENCED PRIOR TO A CONSTRUCTION PROJECT IN THE VICINITY.

A description of the physical condition of the monument as found and as set or reset: _____

FOUND AND SET POINTS AS SHOWN ON PAGE 2.

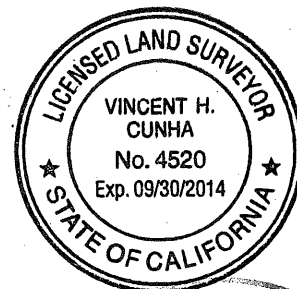
THESE TIES ARE FOR THE PURPOSE OF PERPETUATING THE FOUND MONUMENTATION.

NO CLAIM IS MADE AS TO THE RELATIONSHIP OF THE POINTS OR LINES SHOWN HEREON
 TO TRUE BOUNDARY LOCATIONS.

SURVEYOR'S STATEMENT

This Corner Record was prepared by me or under my direction in conformance with
 the Land Surveyors' Act on NOVEMBER 4, 2013.

Signed Vincent H. Cunha L.S. Number LS 4520



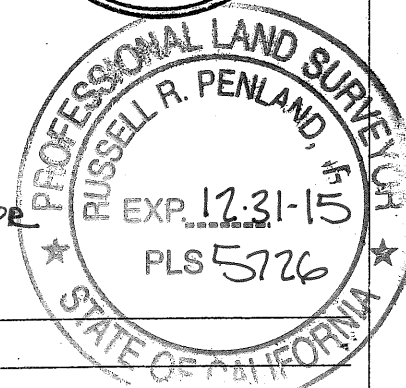
COUNTY SURVEYOR'S STATEMENT

This Corner Record was received _____ 20____ and examined

and filed 1-9-2014

Signed Russell R. Penland

THE COUNTY SURVEYOR



County Surveyor's Comment _____

DH13B3

SCALE: 1"=20'

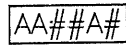
LEGEND



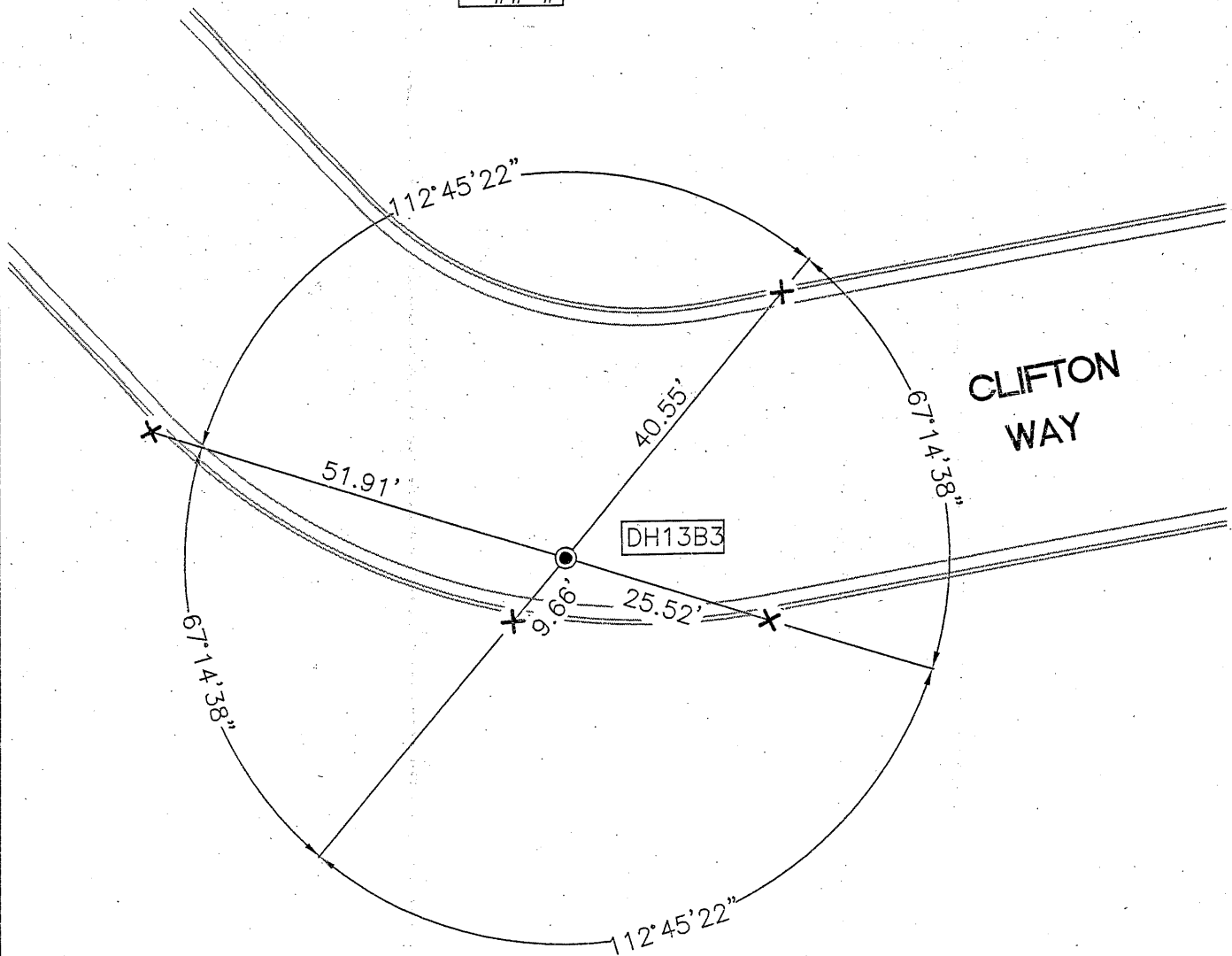
FOUND IRON PIN MONUMENT



SET CUT CROSS IN CONCRETE



ALAMEDA COUNTY MONUMENT ID



CLIFTON
WAY

18515 CLIFTON WY