

County Surveyors Office  
Stanislaus County

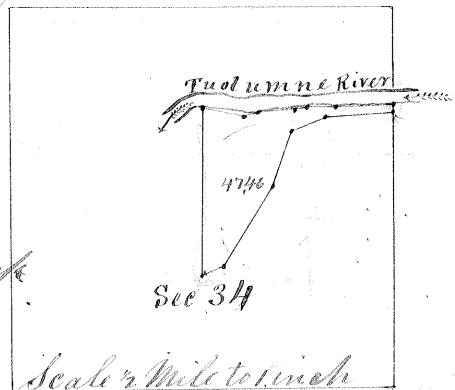
Swamp and Overflowed Lands.

Survey No 146 Resurvey of Nos 1, 13 & 30

Township 3 South

Range 12 East

Section 34 all between the United  
States Meander line and the left Bank  
of the Tuolumne River in the East 1/2 of  
Section 34



Base and Meridian of Mount Diablo

Containing 47.46 Acres

Surveyed March 8<sup>th</sup> 1860 for

William S. Dickenson

Field Notes

Beginning at Meander Post on line between Sections 34 & 35 thence  
run on section line  $N 4^{\circ} W 50$  chs, to the left Bank of the Tuolumne River  
Meander down stream run  $S 87^{\circ} W 12.38$  chs, West 600 chs,  $S 71^{\circ} W 240$  chs,  
 $S 33^{\circ} W 800$  chs,  $S 76^{\circ} W 2.66$  chs,  $N 79^{\circ} W 9.14$  chs, to 1/4 Section line thence  
line thence run on 1/4 Section line  $S 1^{\circ} E 3500$  chs, to the United States  
Meander line thence run on the United States Meander line  
 $N 64^{\circ} E 436$  chs,  $N 31^{\circ} E 2000$  chs,  $N 18^{\circ} E 12000$  chs,  $N 65^{\circ} E 8000$  chs,  
 $N 87^{\circ} E 1400$  chs, to the place of beginning, The above is a Resurvey  
of No 1 Made for Jacob Harvey Gardenhire November 6<sup>th</sup> 1853  
No 13 Made for William S. Dickenson November 24<sup>th</sup> 1855  
and No 30 Made for William Dickenson December 20<sup>th</sup> 1856  
Run by the true Meridian Magnetic Variation  $15^{\circ} 33'$  East

Surveyed in accordance with the Act of the  
Legislature concerning Swamp and Overflowed Lands approved  
April 18<sup>th</sup> 1852 and the instructions of the Surveyor General

Silas Wiley

County Surveyor Stanislaus County

Approved March 21<sup>st</sup> 1860

H. A. Higley

Surveyor General

Approval Recorded March 24<sup>th</sup> 1860

Silas Wiley

County Surveyor Stanislaus County