

8/11

2/12/1

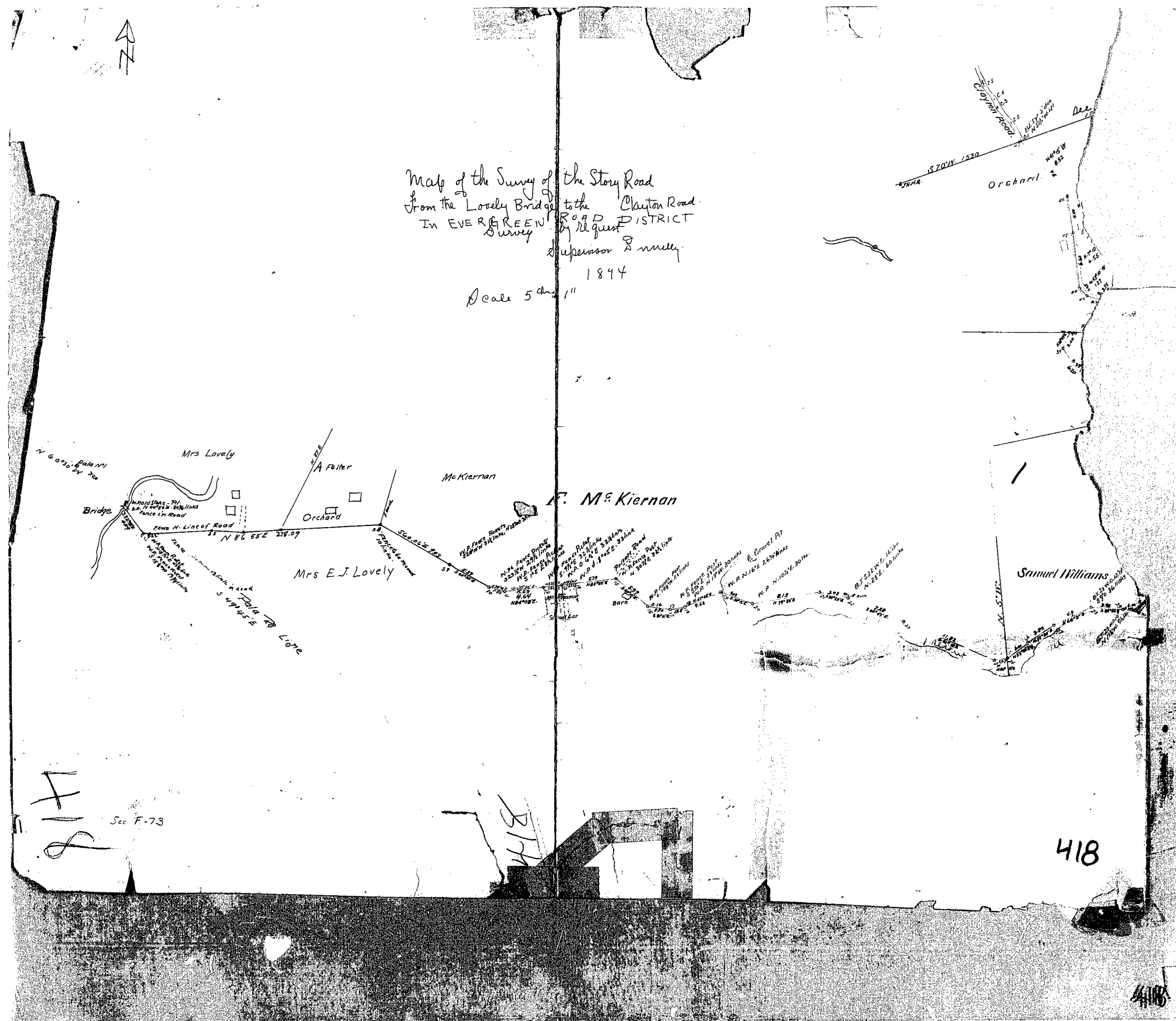
418

418

Map of the Survey of the Story Road  
 from the Lovely Bridge to the Clayton Road.  
 In EVERGREEN ROAD DISTRICT  
 Survey by request  
 Supervisor S. M. Kelly.

1894

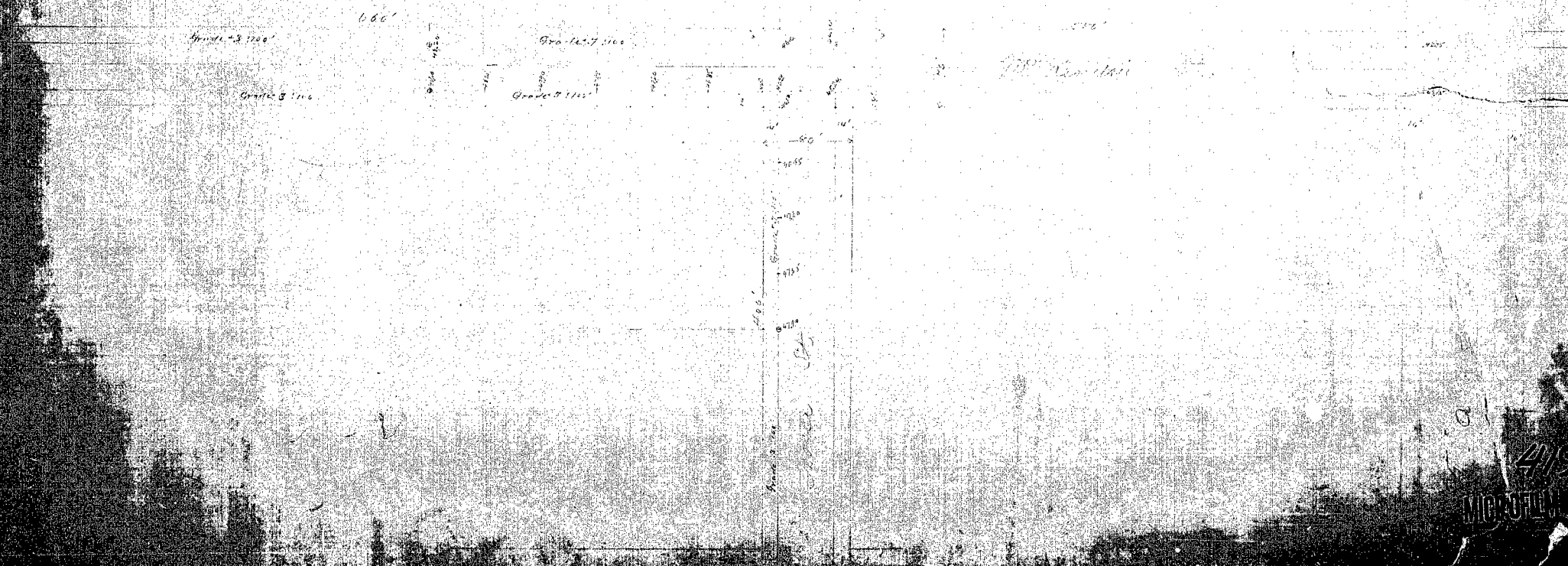
Scale 5 ch. = 1"



PROPERTY OF  
SANTA CLARA CO.  
OFFICE OF THE  
COUNTY SUPERVISOR  
DRAWING  
NUMBER

W. & P. of  
Official Grade of McNamee St.  
Established Aug 29, 1895  
J. E. Miller  
Civil Engineer

Underground Etc.  
The Alameda Street Tunnel, San Jose, Cal.  
1895 - 1896



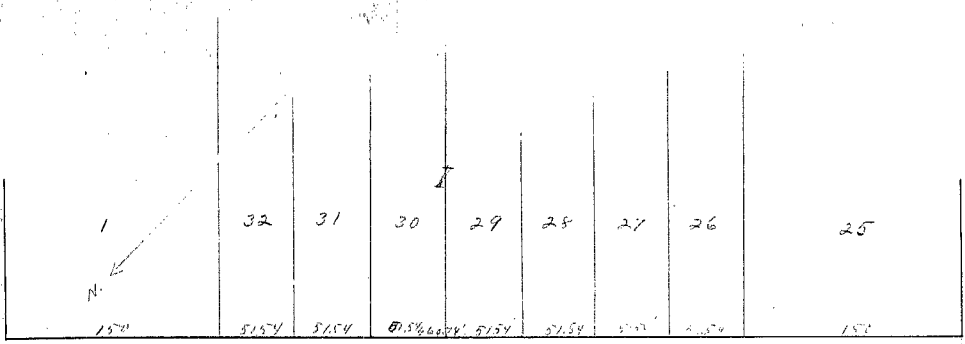
419  
MICROFILM

Labury

150' 515' 515' 515' 515' 515' 515' 515' 515' 515'

Johnson

10

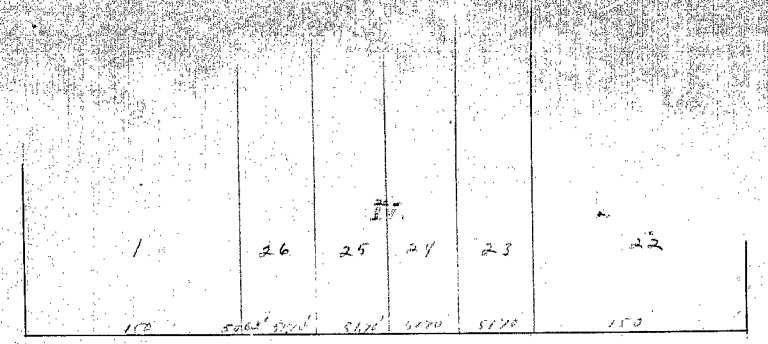


150' 515' 515' 515' 515' 515' 515' 515' 515' 515'

270 110 110 270

1 8 9 20

Section XI  
 N. 40° E. 1/4 Sec. 10  
 T. 10 N. R. 10 E. S. 10  
 as established from a survey of the  
 land of the State of Ohio  
 made in 1815  
 J. H. Miller  
 Co. Surveyor



150' 515' 515' 515' 515' 515' 515' 515' 515' 515'

270 110 110 270

1 8 9 20

XXI

Wabury

Wabury

Johnson

I.

10.

420

N.

32

31

30

29

28

27

26

25

150

5154

5154

0.56684

5154

5154

5154

5154

150

Wabury Wabury West Bay, June 22, 1895

220

8

9

10

XI.

X. Wabury Wabury

Wabury Wabury

From Wabury Wabury

Wabury Wabury

Wabury Wabury

Wabury Wabury

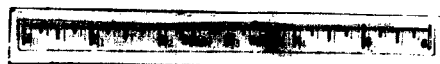
Wabury Wabury

XXI.



420

Given under my hand and seal of the  
 State of New York, April 19, 1950.  
 Governor



## Home

*Harrison Avenue*

*Hulet Street*

[illegible]

RECORDED AT REPOSE OF