

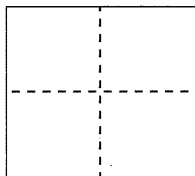
CORNER RECORD

Document Number CR5331

City of Castro Valley (APN 84C-745-37)

County of Alameda, California

Brief Legal Description Monument at intersection of Heyer ave and Redwood Glen rd; near 4301 Heyer Ave



CORNER TYPE

Government Corner ☐ Control ☒
 Meander ☐ Property ☐
 Rancho ☐ Other ☐

Date of Survey January 18, 2001

COORDINATES (Optional)

N. _____
 E. _____
 Zone _____ NAD27 ☐ NAD83 ☐
 NAD83 Epoch _____
 Elev. _____
 Vert. Datum: NGVD29 ☐ NAVD88 ☐
 Meas. Units: Metric ☐ Imperial ☐

Pre-Construction (Water line) Corner Record

Corner - Left as found ☒ Found and tagged ☐ Established ☐ Reestablished ☐ Rebuilt ☐

Identification and type of corner found: Evidence used to identify or procedure used to establish or reestablish the corner:

Found street monument that could be damaged or destroyed by planned water line construction project.

Monument was referenced as shown on page 2. The purpose of this Corner Record is to preserve possible evidence only; no attempt was made to determine the relationship to property, centerline, or right of way lines.

This work is to document work by previous EBMUD surveyors.

A description of the physical condition of the monument as found and as set or reset:

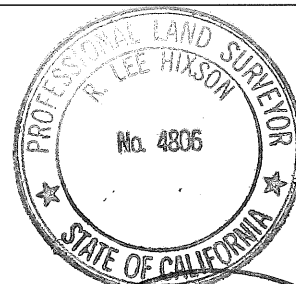
Monument was found in good condition and was referenced with four set reference points representing two intersecting lines as shown on Page 2.

Reference EBMUD Field Book 4207 page 10

SURVEYOR'S STATEMENT

This Corner Record was prepared by me or under my direction in conformance with the Professional Land Surveyor's Act on January 2, 2013

Signed R Lee Hixson P.L.S or R.C.E. No. 4806



COUNTY SURVEYOR'S STATEMENT

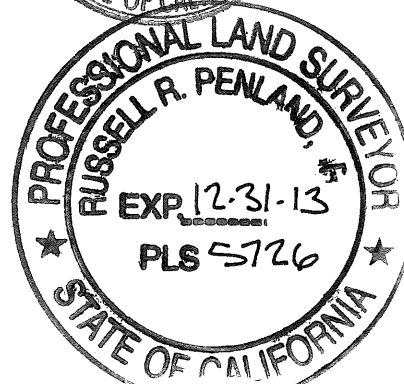
This Corner Record was received 1-3-13

and examined and filed 3-18-13

Signed Russell R. Penland P.L.S or R.C.E. No. 5726

Title County Surveyor

County Surveyor's Comment: _____



FL35H1

CASTRO VALLEY

RANCHO SAN LORENZO
(GUILLERMO CASTRO)
A M 142

19390 COREY WAY
APN 84C-783-12

4316 HEYER AVE.
APN 84C-783-11

COREY WY (PRIVATE)

9' W'LY OF
FIRE HYD.

IN A.C.
DRIVEWAY

HEYER AVE

5' W'LY OF
EDGE DRIVEWAY

24' E'LY OF
ROAD

4275 HEYER AVE.
APN 84C-745-29

4281 HEYER AVE.
APN 84C-745-30

4301 HEYER AVE.
APN 84C-745-37

4311 HEYER AVE.
APN 84C-745-27

PM 5524
187 M 99

PM 7576
256 M 40

PM 3175
121 M 15

REDWOOD GLEN
(PRIVATE)

LEGEND

● FOUND PIN IN CONCRETE, DOWN 1.3' IN
MONUMENT WELL PER 85 M 96.

○ SET PK NAIL AND 1½" BRASS WASHER
IN TOP OF CURB. STAMPED "EBMUD
MON RP"

TRACT 3637
85 M 95

SCALE
1"=20'

